

A DVD Teaching Program

# 2011 American Society of Functional Neuroradiology

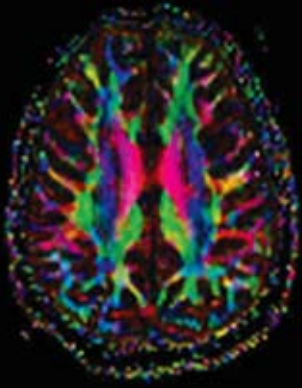


Image Courtesy of:  
Michael L Lipton MD PhD  
Albert Einstein College of Medicine

*15 AMA PRA Category 1 Credit(s)<sup>TM</sup>*

Superior Image Quality  
FREE SYLLABUS with purchase of entire set



**Educational Symposia**

Release Date: September 15, 2011

## About this DVD Series

This DVD series features a series of focused sessions with didactic lectures presented by nationally recognized experts. A broad range of cutting-edge topics in functional neuroradiology, including BOLD functional brain mapping, diffusion, diffusion tensor, perfusion, permeability, PET, MRS, and molecular/metabolic imaging is featured. Details on physical principles, techniques, as well as clinical applications of these state-of-the-art and emerging technologies are discussed along with practical suggestions for implementation in a clinical practice setting. The DVD series includes tracks of basic and advanced imaging methodology to characterize CNS lesions with individual techniques as well as a multimodality approach followed by a presurgical mapping review of eloquent grey matter and white matter cortex. A review of cutting edge special topics from a multimodality prospective and emerging functional techniques are presented.

## Target Audience

This CME activity is intended to educate neuroradiologists, neurosurgeons, neurologists, neuropsychologists, cognitive neuroscientists, as well as fellows, residents, doctoral and post-doctoral students in these fields.

## Scientific Sponsor

Educational Symposia

This DVD series was planned and produced by Educational Symposia, the leader in diagnostic imaging education since 1975.

This DVD series was planned and produced in accordance with the ACCME Essential Areas and Elements.

## Accreditation

**Physicians:** Educational Symposia is accredited by the Accreditation Council for Continuing Medical Education (ACCME) to provide continuing medical education for physicians.

Educational Symposia designates this enduring material for a maximum of 15 *AMA PRA Category 1 Credit(s)*<sup>TM</sup>. Physicians should claim only the credit commensurate with the extent of their participation in the activity.

DVDs 1-7 are designated for two *AMA PRA Category 1 Credit(s)*<sup>TM</sup>. DVD 8 is designated for one *AMA PRA Category 1 Credit(s)*<sup>TM</sup>. The time necessary to complete the series is 15 hours. The time necessary to complete DVDs 1-7 is two hours. The time necessary to complete DVD 8 is one hour.

**Technologists:** No Category A CE credit is available for this series.

All DVD course participants are required to pass a written test with a minimum score of 70% in order to be awarded credit. (Exam materials, if ordered, will be sent with your DVD order.) All DVD course participants will also have the opportunity to critically evaluate the program as it relates to practice relevance and educational objectives.

*AMA PRA Category 1 Credit(s)*<sup>TM</sup>  
for these programs may be claimed until September 14, 2014.

DVD teaching programs feature a distinctive production process termed “**Digital Studio Enhancement**” including:

- Post processed diagnostic images
- Clearly visible pathology and anatomy
- Improved graphic and text legibility
- Electronic pointer correlation with speaker's indications

This production process is exclusive to Educational Symposia DVD programs.

## Educational Objectives

At the completion of this DVD CME series, subscribers should be able to:

- Describe the underlying physical basis of advanced functional and physiological imaging techniques such as BOLD fMRI, Diffusion, DTI, Perfusion, Permeability, MRS, PET and molecular/metabolic imaging.
- Become familiar with the clinical applications and limitations of advanced functional and physiological imaging techniques.
- Discuss how to effectively integrate such techniques into clinical practice, with awareness of pertinent economic and logistical issues.

*No special educational preparation is required for this CME activity.*

# Program

## Program 1

Diffusion – Physical Principles  
*Elias R. Melhem, M.D., Ph.D.*

Diffusion – Clinical Applications  
*Pamela Schaefer, M.D.*

Perfusion – Physical Principles: Gad Bolus/ASL  
*Jeffrey M. Pollock, M.D.*

Perfusion – Clinical Applications Review  
*Ronald L. Wolf, M.D., Ph.D.*

## Program 2

Perfusion – Case-based ASL Perfusion  
*Joseph A. Maldjian, M.D.*

Functional CSF Velocity Imaging of Normal Pressure Hydrocephalus  
*William G. Bradley, Jr., M.D., Ph.D., FACR*

Metabolic Imaging  
*Keith R. Thulborn, M.D., Ph.D.*

## Program 3

Permeability Imaging: Physical Principles and Clinical Applications  
*Mark S. Shiroishi, M.D.*

MRS – Clinical Applications  
*Alena Horska, Ph.D.*

PET: Head and Neck  
*Laurie A. Loevner, M.D.*

BOLD – fMRI in Adults  
*Joy Hirsch, Ph.D.*

## Program 4

PET: Brain  
*Richard L. Wahl, M.D.*

Review of Language and Memory Cognitive Functions  
*Andrew J. Saykin, Psy.D., ABCN*

Multimodality Algorithm Approach to Intracranial Mass Characterization  
*Arastoo Vossough, M.D., Ph.D.*

Brain Mapping: Neurosurgical Perspective (Continued on Program 5)  
*Cameron W. Brennan, M.D.*

## Program 5

Brain Mapping: Neurosurgical Perspective (Continued from Program 4)  
*Cameron W. Brennan, M.D.*

Functional and Dysfunctional Anatomy of Language White Matter Networks  
*Andrew P. Klein, M.D.*

Ultra High Field MRI  
*Kamil Ugurbil, Ph.D.*

BOLD fMRI and DTI: Review and Complementary Techniques for Presurgical Mapping  
*Jay J. Pillai, M.D.*

## Program 6

Physical Principles of Diffusion Tensor Imaging  
*Aaron S. Field, M.D., Ph.D.*

BOLD – fMRI in Pediatrics  
*Byron Bernal, M.D., CCTI*

Neurodegenerative Disease: Functional Neuroimaging Disease  
*Jeffery R. Petrella, M.D.*

Spine: Functional Neuroimaging (DTI/fMRI)  
*Alexander Lerner, M.D.*

## Program 7

Traumatic Brain Injury: Functional Neuroimaging  
*Michael L. Lipton, M.D., Ph.D.*

Applications of MRI to Psychopharmacology  
*Betty Jo Salmeron, M.D.*

MRS – Physical Principles  
*Stefan Bluml, Ph.D.*

Brain Mapping Resting State and Connectivity: Potential Clinical Applications (Today and Tomorrow)  
*Haris Sair, M.D.*

## Program 8

Accredited for 1 AMA PRA Category 1 Credit(s)<sup>™</sup>

BOLD – Physical Principles/Neurovascular Uncoupling  
*David J. Mikulis, M.D.*

BOLD – Clinical Challenges in BOLD fMRI  
*Susan Bookheimer, Ph.D.*

Faculty & topics subject to change.

If you receive more than one brochure, please pass the extra along to a colleague.

# Faculty

## **Byron Bernal, M.D., CCTI**

*Clinical Neuroscientist  
Department of Radiology  
Section of fMRI and Neuroconnectivity  
Miami Children's Hospital/Research Institute  
Miami, FL*

## **Stefan Bluml, Ph.D.**

*Director of New Imaging Technology Laboratory  
Department of Radiology  
Children's Hospital of Los Angeles  
Associate Professor of Research Radiology  
Keck School of Medicine, USC  
Los Angeles, CA*

## **Susan Bookheimer, Ph.D.**

*Joaquin Fuster Professor of Cognitive Neurosciences  
Department of Psychiatry and Biobehavioral Sciences  
UCLA School of Medicine  
Los Angeles, CA*

## **William G. Bradley, Jr., M.D., Ph.D., FACR**

*Professor and Chairman  
Department of Radiology  
University of California, San Diego*

## **Cameron W. Brennan, M.D.**

*Neurosurgeon  
Memorial Sloan-Kettering Cancer Center  
Assistant Professor of Neurosurgery  
Weill Medical College of Cornell University  
New York, NY*

## **Aaron S. Field, M.D., Ph.D.**

*Associate Professor of Radiology and  
Biomedical Engineering  
Department of Radiology, Neuroradiology Division  
University of Wisconsin School of Medicine  
and Public Health  
Madison, WI*

## **Joy Hirsch, Ph.D.**

*Professor of Functional Neuroradiology,  
Neuroscience and Psychology  
Director, Functional MRI Research Center  
Departments of Radiology, Neuroscience,  
and Psychology  
Columbia University Medical Center  
New York, NY*

## **Alena Horska, Ph.D.**

*Assistant Professor  
The Russell H. Morgan Department of Radiology and  
Radiological Science  
Division of Neuroradiology  
The Johns Hopkins University  
Baltimore, MD*

## **Andrew P. Klein, M.D.**

*Assistant Professor of Neuroradiology  
Medical College of Wisconsin  
Milwaukee, WI*

## **Alexander Lerner, M.D.**

*Assistant Professor  
Division of Neuroradiology  
Department of Radiology  
Keck School of Medicine  
University of Southern California  
Los Angeles, CA*

## **Michael L. Lipton, M.D., Ph.D.**

*Associate Director  
Gruss Magnetic Resonance Research Center  
Director of Radiology Research  
Departments of Radiology, Psychiatry and Behavioral  
Sciences and Neuroscience  
Medical Director, Magnetic Resonance Services  
Montefiore Medical Center  
Albert Einstein College of Medicine  
Bronx, New York*

## **Laurie A. Loevner, M.D.**

*Professor of Radiology, Otorhinolaryngology: Head and  
Neck Surgery, and Neurosurgery  
Director of Head and Neck Imaging  
Department of Radiology  
Neuroradiology Division  
Hospital of the University of Pennsylvania  
Philadelphia, PA*

## **Joseph A. Maldjian, M.D.**

*Professor and Chief of Neuroradiology  
Director Advanced Neuroscience Imaging  
Research Core (ANSIR)  
Wake Forest University School of Medicine  
Winston-Salem, NC*

## **Elias R. Melhem, M.D., Ph.D.**

*Wallace Miller Senior Professor  
Associate Chair for Neuroradiology  
Associate Chair of Education  
Division Chief  
Department of Radiology  
University of Pennsylvania School of Medicine  
Philadelphia, PA*

## **David J. Mikulis, M.D.**

*Professor and Co-Director of Medical Imaging Research  
Department of Medical Imaging  
The University of Toronto  
The University Health Network  
The Toronto Western Hospital  
Toronto, Canada*

## **Jeffrey R. Petrella, M.D.**

*Associate Professor of Radiology  
Division of Neuroradiology  
Director, Alzheimer Disease Imaging Research Laboratory  
Duke University Medical Center  
Durham, NC*

# NEW!!

**Purchase and Submit Your CME Application**  
Visit [www.edusymp.com](http://www.edusymp.com) and see ESI events and

Jay J. Pillai, M.D.  
*Director of Functional MRI  
Neuroradiology Division  
The Russell H. Morgan Department of Radiology  
and Radiological Science  
Johns Hopkins University School of Medicine  
Attending Neuroradiologist  
The Johns Hopkins Hospital  
Baltimore, MD*

Jeffrey M. Pollock, M.D.  
*Assistant Professor of Neuroradiology  
Director of Functional MRI  
Oregon Health and Science University  
Portland, OR*

Haris Sair, M.D.  
*Assistant Professor  
The Russell H. Morgan Department of Radiology  
and Radiological Science  
Division of Neuroradiology  
The Johns Hopkins Hospital  
Baltimore, MD*

Betty Jo Salmeron, M.D.  
*Staff Clinician, Neuroimaging Research Branch  
National Institute on Drug Abuse,  
Intramural Research Program  
National Institutes of Health  
Baltimore, MD*

Andrew J. Saykin, Psy.D., ABCN  
*Raymond C. Beeler Professor of Radiology  
and Imaging Sciences  
Professor of Medical and Molecular Genetics  
Director, Center for Neuroimaging  
Indiana University School of Medicine  
Indianapolis, IN*

Pamela W. Schaefer, M.D.  
*Assistant Professor in Radiology  
Harvard Medical School  
Associate Director of Neuroradiology  
Clinical Director of MRI  
Director of Neuroradiology Fellowship Program  
Massachusetts General Hospital*

Mark S. Shiroishi, M.D.  
*Assistant Professor  
Division of Neuroradiology  
Department of Radiology  
Keck School of Medicine  
University of Southern California  
Los Angeles, CA*

Keith R. Thulborn, M.D., Ph.D.  
*Professor of Radiology, Physiology and Biophysics  
Director, Center for Magnetic Resonance Research  
University of Illinois  
Chicago, IL*

Kamil Ugurbil, Ph.D.  
*Director, Center for Magnetic Resonance Research  
McKnight Presidential Chair Professor of Radiology  
Professor, Departments of Radiology, Neurosciences  
and Medicine  
University of Minnesota  
Minneapolis, MN*

Arastoo Vossough, M.D., Ph.D.  
*Assistant Professor of Radiology, Hospital of the University of  
Pennsylvania and the Children's Hospital of Philadelphia  
Philadelphia, PA*

Richard L. Wahl, M.D.  
*Professor of Radiology and Oncology  
Director, Division of Nuclear Medicine/PET  
Henry N. Wagner Professor of Nuclear Medicine  
Vice Chair Technology and New Business Development  
Russell H. Morgan Department of Radiology and  
Radiological Science  
Johns Hopkins University  
Baltimore, MD*

Ronald L. Wolf, M.D., Ph.D.  
*Associate Professor of Radiology  
University of Pennsylvania School of Medicine  
Philadelphia, PA*

Faculty & topics subject to change.

## ORDER ONLINE AND SAVE

For every dollar spent through Educational Symposia's website an ESI POINT is earned. Use points toward future meeting registrations or DVD orders. Visit [www.edusymp.com](http://www.edusymp.com) and click on the Help Center tab to learn more and sign up to start earning ESI POINTS Today!

tion | Critique | Test Package Online.  
d information for details.

## DVD CME Packs

Educational Symposia is constantly exploring ways to better serve our customers. Subscribers of our DVD CME teaching programs asked for a simpler way to share a DVD Teaching Program. We listened and are pleased to offer the **DVD CME Pack**.

Here's how it works. Purchase the original DVD teaching program then order as many **DVD CME Packs** as needed at a significantly reduced price. It really is that simple!

Educational Symposia's innovative **DVD CME Packs** allow each participating physician to own his/her set of DVDs. A personal set provides the opportunity to view at one's own convenience and adds to a personal reference library. **DVD CME Packs** are priced to make it a practical alternative to "waiting in line" to receive the next DVD.

Each **DVD CME Pack** contains:

- An **entire set** of DVDs in a convenient case designed for durability and ease of access
- One CME application and test
- A one or two volume syllabus (depending on the series). Syllabus is included in the purchase price but is not enclosed in the DVD CME case.

See order form to order a **DVD CME Pack** for this series. To order a **DVD CME Pack** for a previously purchased DVD teaching program, visit us online at [www.edusymp.com](http://www.edusymp.com), or call toll free (800) 338-5901.



## Multiple CME Subscribers.....

Educational Symposia DVD Teaching Programs are accredited for *AMA PRA Category 1 Credit(s)*<sup>TM</sup> for three years from the original release date. Once the initial order is placed, the number of CME applications and/or **DVD CME Packs** that can be ordered is limitless. Simply call (800) 338-5901 or access our website at [www.edusymp.com](http://www.edusymp.com) and reference the name of the person or facility of the originating order. See order form for pricing.

## Cancellation Policy

If you are not satisfied with your purchase, you may return your purchase (or any portion of your purchase) within 15 days of receiving it. You will receive a refund for the portion that is returned less a \$125.00 processing fee. If you are returning/cancelling multiple DVD series, please note the \$125.00 processing fee applies to each series. If your purchase was sent express, the additional shipping charges will NOT be refunded. No refunds can be made after 15 days. All cancellations must be in writing. CME credit cannot be granted on the portion of the purchase that is returned. Abuse of this cancellation policy (2 or more returns) renders the cancellation policy void. There are no refunds for DVD CME Packs.

## 4 EASY WAYS TO ORDER

WE ACCEPT:



### Internet

**SECURE WEBSITE**

Order online & SAVE using your credit card number at: <https://www.edusymp.com>

*\*See order form for details.*

**Mail** your order form, along with your credit card number and signature or check payable to Educational Symposia, to:

Educational Symposia  
5620 West Sligh Avenue  
Tampa, Florida 33634-4490

**Fax** your order form to: (800) 344-0668 (toll-free, U.S. & Canada) or (813) 806-1001 (direct). Please include your MasterCard, VISA, NOVUS/Discover Card or American Express information, including a signature.

**Phone** (800) 338-5901 (toll-free, U.S. & Canada) or (813) 806-1000 (direct). Please have your MasterCard, VISA, NOVUS/Discover Card or American Express information available.

## Mailing List Options

Reduce Your Mail Clutter!  
Or Just Add E-mail Announcements!

We are pleased to be able to send you brochures by email informing you of our latest meetings and CME programs. You have the choice of providing your email address, your mailing address or both to receive the brochures. Visit the "Mailing List" section of our website to subscribe ([www.edusymp.com](http://www.edusymp.com)) or call 1-800-338-5901 and please tell us that you wish to receive brochure announcements by email, mail or both.

# American Society of Functional Neuroradiology

Superior Image Quality • FREE SYLLABUS with purchase of entire set

15 AMA PRA Category 1 Credit(s)<sup>™</sup>  
Available until September 14, 2014

Price includes standard ground shipping & handling charges within the continental United States.

Payment must be in U.S. dollars.

Please send the following checked items:

<input type="checkbox"/> <b>ENTIRE SET</b> .....	<b>\$995</b>		
<input type="checkbox"/> <b>PROGRAM 1</b> .....	\$225	<input type="checkbox"/> <b>PROGRAM 5</b> .....	\$225
<input type="checkbox"/> <b>PROGRAM 2</b> .....	\$225	<input type="checkbox"/> <b>PROGRAM 6</b> .....	\$225
<input type="checkbox"/> <b>PROGRAM 3</b> .....	\$225	<input type="checkbox"/> <b>PROGRAM 7</b> .....	\$225
<input type="checkbox"/> <b>PROGRAM 4</b> .....	\$225	<input type="checkbox"/> <b>PROGRAM 8</b> .....	\$125

**CME APPLICATION(S) NOT INCLUDED IN PURCHASE PRICE**

Additional Syllabus \_\_\_\_\_ at \$65.00 Each \_\_\_\_\_

For orders sent to a Florida address, please add 7% sales tax \_\_\_\_\_

For orders sent to a California address, please add 8.75% sales tax \_\_\_\_\_

Number of DVD CME Packs requested \_\_\_\_\_ at \$295 each \_\_\_\_\_

Optional Domestic Shipping Methods:  Overnight\* (≈75)  2nd Day\* (≈45)  3rd Day\* (≈30) (Delivery times are business days only)

For orders shipped to Canada add \$75 for shipping (Please allow 3 - 5 business days for delivery)

For international orders (excluding Canada or Mexico), add \$175 for shipping (Please allow 3 - 6 business days for delivery)

Number of CME applications requested (1 CME application required per person) \_\_\_\_\_ at \$95 each \_\_\_\_\_

**TOTALS** \_\_\_\_\_

**\*\*ORDER ONLINE AND SAVE: Save \$20 by providing the Brochure Code on the mail panel just above your name (only the last two digits before the number symbol # are needed)\*\***

**ORDER BY CREDIT CARD** Fax (800) 344-0668 or call (800) 338-5901 (toll-free, U.S. & Canada)

Name \_\_\_\_\_ ASFNRV11  
*First Middle Last*

Degree  M.D.  D.O.  Ph.D.  Other \_\_\_\_\_

Specialty \_\_\_\_\_

Facility/Organization \_\_\_\_\_ Dept. \_\_\_\_\_

Street Address  HOME  OFFICE \_\_\_\_\_

*Sorry, No P.O. Boxes. We cannot be responsible for nondelivery when we receive an incorrect address. Signature required.*

City \_\_\_\_\_ State \_\_\_\_\_ Zip \_\_\_\_\_

Phone \_\_\_\_\_ Fax \_\_\_\_\_

E-mail \_\_\_\_\_

Mail Brochure Panel Code \_\_\_\_\_

**If you wish to receive email notification of your shipment, please provide your email address.**

**HOW WOULD YOU LIKE TO RECEIVE FUTURE MEETING AND DVD ANNOUNCEMENTS?**  Mail Only  Email Only  Both Mail and Email

**PAYMENT INFORMATION - If credit card name or billing address differs from the address listed above please provide the correct billing address.**

Check Enclosed (Payable to: Educational Symposia)

Charge to Credit Card:        

Card Number \_\_\_\_\_ Expires \_\_\_\_\_

Card Security Code\* \_\_\_\_\_ \*MasterCard, Visa and Discover: The last 3 Digits printed in signature space on card back. American Express: 4 Digits above account number on card front.

Signature \_\_\_\_\_ (Your signature is your authorization to charge this credit card)

Name on Card \_\_\_\_\_

Billing Address \_\_\_\_\_

City \_\_\_\_\_ State \_\_\_\_\_ Zip \_\_\_\_\_