

A DVD TEACHING PROGRAM

2009 Classic Lectures in

# BODY IMAGING

with

## MR

## &

## CT

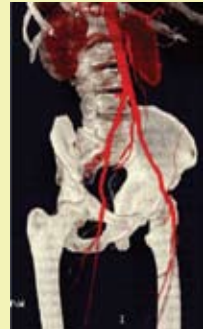
8 Programs

16 AMA PRA  
Category 1 Credits™



15 Programs

30 AMA PRA  
Category 1 Credits™



## BUY BOTH SETS & SAVE

Superior Image Quality • FREE SYLLABUS with purchase of each entire set



Educational Symposia

Release Date: August 15, 2009

## ABOUT THESE DVD'S

These DVD CME activities are the most comprehensive body MR & CT teaching courses available. Practical lectures from talented faculty provide up-to-date clinical information for physicians who order, perform and interpret body MR & CT procedures.

## SCIENTIFIC SPONSOR

Educational Symposia

### TARGET AUDIENCE

The DVD CME activity is primarily intended and designed to educate diagnostic imaging physicians. It should also be useful for referring physicians who order these studies so that they might gain a greater appreciation of the strengths and limitations of clinically relevant MR studies.

### EDUCATIONAL OBJECTIVES

At the completion of this DVD CME series, subscribers should be able to:

- Implement state of the art MR angiography protocols for the evaluation of the cardiovascular system into clinical practice.
- Describe the clinical applications of MR in the assessment and evaluation of cardiac disease.
- Optimize MR/MRA protocols for the assessment of hepatic and pancreatic disease.
- Discuss the clinical applications of pelvic MR.
- Accurately assess breast pathology using state of the art MR protocols and techniques.
- Describe the expanding role for MR in the assessment of OB/GYN disorders.

*No special educational preparation is required for this CME activity*

### ACCREDITATION

**Physicians:** Educational Symposia is accredited by the Accreditation Council for Continuing Medical Education (ACCME) to sponsor continuing medical education for physicians.

Educational Symposia designates this educational activity for a maximum of 16 *AMA PRA Category 1 Credit(s)*<sup>TM</sup>. Physicians should only claim credit commensurate with the extent of their participation in the activity.

Each DVD is designated for two category 1 credits. The time necessary to complete the series is 16 hours. The time necessary to complete each DVD is two hours.

**AMA PRA Category 1 Credit(s)**<sup>TM</sup> for these programs may be claimed until August 14 , 2012.

**Technologists:** No Category A CE credit is available for these series.

All DVD course participants are required to take a test in order to be awarded credit. (Exam materials, if ordered, will be sent with your DVD order.) All DVD course participants will also have the opportunity to critically evaluate the program as it relates to practice relevance and educational objectives.

This DVD series was planned and produced by Educational Symposia, the leader in diagnostic imaging education since 1975.

This DVD series was planned and produced in accordance with the ACCME Essential Areas and Elements.

### TARGET AUDIENCE

The DVD CME activity is primarily intended and designed to educate diagnostic imaging physicians. It should also be useful for referring physicians who order these studies so that they might gain a greater appreciation of the strengths and limitations of clinically relevant CT studies.

### EDUCATIONAL OBJECTIVES

At the completion of this DVD CME series, subscribers should be able to:

- Integrate CT imaging protocols for the assessment of cardiac and pulmonary disease into clinical practice.
- Recognize the CT appearance of normal anatomy and common pathology of the stomach, bowel, and kidneys.
- Apply the concepts and applications of CTA for the assessment of peripheral vascular disease to clinical practice.
- Assess acute and chronic abdominal pathology utilizing multislice CT and CTA.
- Discuss the clinical indications and applications of CT colonography.
- Implement state of the art imaging protocols for assessment of the pelvis to clinical practice.
- Incorporate dose minimizing protocols and techniques for all CT procedures.

*No special educational preparation is required for this CME activity*

### ACCREDITATION

**Physicians:** Educational Symposia is accredited by the Accreditation Council for Continuing Medical Education (ACCME) to sponsor continuing medical education for physicians.

Educational Symposia designates this educational activity for a maximum of 30 *AMA PRA Category 1 Credit(s)*<sup>TM</sup>. Physicians should only claim credit commensurate with the extent of their participation in the activity.

Each DVD is designated for two category 1 credits. The time necessary to complete the series is 30 hours. The time necessary to complete each DVD is two hours.

# MR Faculty

**Susan M. Ascher, M.D.**

Professor of Radiology  
Director, Division of Abdominal Imaging  
Georgetown University Hospital

**David A. Bluemke, M.D., Ph.D., MsB.**

Associate Professor, Diagnostic Radiology and Medicine  
Clinical Director, MRI Division  
Johns Hopkins University School of Medicine

**Daniel Cornfeld, M.D.**

Assistant Professor of Diagnostic Radiology  
Yale University School of Medicine  
Yale New Haven Hospital

**Robert R. Edelman, M.D.**

Professor of Radiology  
Feinberg School of Medicine, Northwestern University  
Chairman of Radiology  
Evanston Northwestern Healthcare

**Thomas M. Grist, M.D.**

John H. Juhl Professor of Radiology  
Medical Physics and Bioengineering  
Chairman, Department of Radiology  
University of Wisconsin-Madison School of Medicine and Public Health

**Russell N. Low, M.D.**

Medical Director  
Sharp and Children's MRI Center  
San Diego, CA

**Linda Moy, M.D.**

Assistant Professor of Radiology  
New York University School of Medicine

**Vamsi R. Narra, M.D., FRCR**

Associate Professor of Radiology  
Chief of Radiology BJWCH  
Co-Chief Body MRI  
Co-Director Body MRI Fellowship  
Medical Director CCIR  
Mallinckrodt Institute of Radiology  
Washington University School of Medicine

**Scott Reeder, M.D., Ph.D.**

Assistant Professor  
Department of Radiology  
Division Chief of MRI  
Magnetic Resonance Imaging  
University of Wisconsin - Madison

**Jeffrey C. Weinreb, M.D., FACR**

Professor of Radiology  
Yale University School of Medicine  
Chief of MRI  
Chief of Abdominal Imaging  
Director of Imaging Services  
Yale-New Haven Hospital

# CT Faculty

**Michael N. Brant-Zawadzki, M.D., FACR**

Executive Medical Director,  
Neurosciences  
Hoag Memorial Hospital Presbyterian  
Newport Beach, CA  
Adjunct Clinical Professor of Radiology  
Stanford University School of Medicine

**Jeffrey Brinker, M.D., FACC, FSCAI**

Professor of Medicine and Radiology  
Johns Hopkins University

**Melvin E. Clouse, M.D., FACR, FAHA, FSIR**

Deaconess Professor of Radiology  
Harvard Medical School  
Emeritus Chairman and Director of  
Radiology Research  
Beth Israel Deaconess Hospital  
Boston, MA

**Jaydip Datta, M.D.**

Director, Cardiovascular MRI and CT  
Quantum Radiology Northwest  
Marietta, GA  
Adjunct Assistant Professor of  
Radiology  
Vanderbilt University

**Elliot K. Fishman, M.D., FACR**

Professor of Radiology and Oncology  
Director, Diagnostic Radiology and  
Body CT  
Johns Hopkins Hospital  
Baltimore, MD

**W. Dennis Foley, M.D.**

Professor of Radiology  
Director, Section of Digital Imaging  
Medical College of Wisconsin

**Donald P. Frush, M.D., FACR, FAAP**

Professor of Radiology and Pediatrics  
Chief, Pediatric Radiology  
Department of Radiology  
Duke University Medical Center  
Durham, NC

**David Gianfelice, M.D.**

Head of Vascular/Interventional  
Radiology  
University Health Network  
Associate Professor of Abdominal  
Imaging and Interventional Radiology  
University of Toronto  
Toronto, Ontario, Canada

**Ashok K. Gupta, M.D.**

Associate Radiologist  
Desert Radiologists  
Las Vegas, NV

**Anna S. Lev-Toaff, M.D.**

Professor of Radiology  
Department of Radiology  
Hospital of University of Pennsylvania  
Philadelphia, PA

**Rendon C. Nelson, M.D.,**

**FACR**  
Reed and Martha Rice Professor of  
Radiology  
Division of Abdominal Imaging  
Duke University  
Durham, NC

**Joel D. Neuman, M.D.**

Director Interventional Radiology  
Nazareth Imaging Associates  
Philadelphia, PA

**Joel F. Platt, M.D.**

Professor of Radiology  
Director of Abdomen Division  
Head of Body CT  
University of Michigan Hospital

**Myron A. Pozniak, M.D.**

Professor of Radiology  
Chief of Abdominal Imaging Division  
University of Wisconsin School of  
Medicine

**Jonas Rydberg, M.D.**

Professor of Clinical Radiology  
Indiana University  
Medical Director  
Department of Radiology  
Methodist Hospital  
Indianapolis, IN

**Jorge A. Soto, M.D.**

Vice Chairman of Radiology  
Professor of Radiology  
Boston University School of Medicine  
Boston, MA

**Lawrence N. Tanenbaum, M.D., FACR**

Director MRI, CT and Outpatient/  
Advanced Development  
Mount Sinai School of Medicine  
New York, NY

**Michael W. Vannier, M.D.**

Professor  
Department of Radiology  
University of Chicago Medical Center

**Charles S. White, M.D.**

Professor of Radiology and Medicine  
Chief of Thoracic Radiology  
Vice Chair, Clinical Affairs  
University of Maryland

**Max Wintermark, M.D.**

Assistant Professor in Radiology  
Department of Radiology,  
Neuroradiology Section  
University of California, San Francisco

**Steven D. Wolff, M.D., Ph.D.**

Director of Advanced  
Cardiovascular Imaging  
Assistant Professor of Medicine  
and Radiology  
Columbia University, College of  
Physicians and Surgeons  
New York, NY

**Jack A. Ziffer, Ph.D., M.D.**

Chief of Radiology  
Baptist Hospital of Miami  
Medical Director, Cardiac Imaging  
Baptist Cardiac & Vascular Institute

DVD teaching programs feature a distinctive production process termed “Digital Studio Enhancement” including

- Post processed diagnostic images
- Clearly visible pathology and anatomy
- Improved graphic and text legibility
- Electronic pointer correlation with speaker's indications

This production process is exclusive to Educational Symposia DVD programs.

If you receive more than one brochure, please pass the extra along to a colleague.

# Body Imaging with MR Program

## PROGRAM 1

Body MRI: New Techniques and Old Pearls  
*Russell N. Low, M.D.*

Thoracic and Abdominal MR Angiography  
*Daniel Cornfeld, M.D.*

Time Resolved MRA at 1.5 and 3T  
*Thomas M. Grist, M.D.*

## PROGRAM 2

Contrast Enhanced MR Angiography of the Abdominal Aorta and Renal Arteries  
*Vamsi R. Narra, M.D., FRCR*

MR Angiography Applications in the Chest  
*David A. Bluemke, M.D., Ph.D., MsB.*

Cardiac MRI vs. CT: Which to Use?  
*Robert R. Edelman, M.D.*

## PROGRAM 3

Cardiac MRI: Top Ten Indications and Diagnoses  
*Thomas M. Grist, M.D.*

3T Body MRI Case Reviews  
*Jeffrey C. Weinreb, M.D., FACR*

MRI/MRA of Pulmonary Vascular Disorders  
*Thomas M. Grist, M.D.*

## PROGRAM 4

MRI of Myocardial Viability  
*David A. Bluemke, M.D., Ph.D., MsB.*

Cardiac MRI Practical Applications  
*David A. Bluemke, M.D., Ph.D., MsB.*

Renal and Adrenal MRI  
*Robert R. Edelman, M.D.*

MRI of the Pancreas  
*Vamsi R. Narra, M.D., FRCR*

# Body Imaging with CT Program

## PROGRAM 1

Coronary CTA: Basic Principles, Anatomy and Technique  
*Steven D. Wolff, M.D., Ph.D.*

Coronary Angiography: Epidemiologic Context  
*Michael N. Brant-Zawadzki, M.D., FACR*

Cardiac CTA: Assessment of Acute Chest Pain in the Emergency Room  
*Charles S. White, M.D.*

## PROGRAM 2

CT in the Evaluation of Acute Chest Pain  
*Jack A. Ziffer, Ph.D., M.D.*

Coronary Calcium Scoring: How to Use This Valuable Tool for Cardiac Risk Assessment  
*Melvin E. Clouse, M.D., FACC, FAHA, FSIR*

CT Coronary Angiography: Efficacy and Role in Clinical Practice  
*Jeffrey Brinker, M.D., FACC, FSCAI*

Modern CT Imaging of Carotid Atherosclerotic Disease  
*Max Wintermark, M.D.*

## PROGRAM 3

Coronary CTA: Clinical Application and Interpretation Including Workstation Demonstration  
*Steven D. Wolff, M.D., Ph.D.*

CT Angiography of Coronary Bypass Grafts  
*Jeffrey Brinker, M.D., FACC, FSCAI*

CTA of the Thoracic Aorta  
*Jaydip Datta, M.D.*

## PROGRAM 4

Coronary Artery CT: Important Lessons from Interesting Cases Including Workstation Demonstration  
*Jack A. Ziffer, Ph.D., M.D.*

MSCT Evaluation of the Aorta  
*Jonas Rydberg, M.D.*

MDCT Angiography of Thoracoabdominal Aortic Aneurysm and Dissection  
*W. Dennis Foley, M.D.*

## PROGRAM 5

Pulmonary Embolism: CT Angiography/Venography  
*W. Dennis Foley, M.D.*

Lung Cancer Screening: Pros and Cons  
*Charles S. White, M.D.*

CT Angiography: Aortic and Peripheral Vascular  
*Lawrence N. Tanenbaum, M.D., FACC*

## PROGRAM 6

CT in Obstetrics and Gynecology  
*Anna S. Lev-Toaff, M.D.*

Abdominal CTA: Techniques and Applications  
*Joel F. Platt, M.D.*

Use of CTA for Detecting Arterial Injuries of the Extremities Including Workstation Demonstration  
*Jorge A. Soto, M.D.*

## PROGRAM 7

Intravascular Contrast and CT Angiography  
*Jeffrey Brinker, M.D., FACC, FSCAI*

Pelvic and Peripheral CTA  
*Joel D. Neuman, M.D.*

MSCT of Pulmonary Emboli and Deep Vein Thrombosis  
*Jonas Rydberg, M.D.*

## PROGRAM 8

Polytrauma Protocols with 64 MDCT  
*Jorge A. Soto, M.D.*

The Role of CT in the Acute Abdomen in Children  
*Donald P. Frush, M.D., FACC, FAAP*

MDCT of Abdominal Trauma: Injuries of the Pancreas, Bowel & Mesentery  
*Jorge A. Soto, M.D.*

# NEW!!

**Purchase and Submit Your CME Application**  
Visit [www.edusymp.com](http://www.edusymp.com) and see ESI events and information

## PROGRAM 5

Aortic and Renal MRA at 1.5 and 3T

*Scott Reeder, M.D., Ph.D.*

Hepatobiliary MRI

*Russell N. Low, M.D.*

MRI of Focal Hepatic Lesions

*Vamsi R. Narra, M.D., FRCR*

MRI of Bowel and Peritoneum

*Russell N. Low, M.D.*

## PROGRAM 6

Advanced Methods for Liver and Abdominal MR Imaging

*Scott Reeder, M.D., Ph.D.*

MRCP: Techniques and Applications

*David A Bluemke, M.D., Ph.D., MsB.*

MRI and MRSI of the Prostate at 1.5 and 3T

*Jeffrey C. Weinreb, M.D., FACR*

## PROGRAM 7

Evaluation of Breast Cancer with Breast MRI

*Linda Moy, M.D.*

Breast MRI and MRS on the 3T

*Linda Moy, M.D.*

Techniques for MRI of the Breast

*Jeffrey C. Weinreb, M.D., FACR*

## PROGRAM 8

MR of Pelvic Malignancy: The Role of MRI

*Susan M. Ascher, M.D.*

Cyst or Serious?

*Jeffrey C. Weinreb, M.D., FACR*

MR: Benign Female Pelvis

*Susan M. Ascher, M.D.*

MRI of Ovarian Masses

*Jeffrey C. Weinreb, M.D., FACR*

Faculty & topics subject to change.

## PROGRAM 9

MDCT of the Stomach

*Elliot K. Fishman, M.D., FACR*

CT Colonography Update Including Workstation

Demonstrations

*Jorge A. Soto, M.D.*

Challenging Cases in Abdominal and Pelvic CT

*Anna S. Lev-Toaff, M.D.*

## PROGRAM 10

Bariatric CT: Scanning the Extremely Obese Patient

*Michael W. Vannier, M.D.*

Enterography: A New View of the Bowel

*Joel F. Platt, M.D.*

Challenging Cases in Pelvic CT

*Anna S. Lev-Toaff, M.D.*

Abdominal Intervention: Interactive Quiz 1

*David Gianfelice, M.D.*

## PROGRAM 11

MDCT of the GU Tract including Workstation

Demonstration

*Joel F. Platt, M.D.*

CT of Body Trauma - Vascular Disruption

*Myron A. Pozniak, M.D.*

Characterization of Focal Liver Lesions

*Jorge A. Soto, M.D.*

## PROGRAM 12

Multi-pass, Multiphase Hepatic CT with a

Multi-slice CT Scanner

*W. Dennis Foley, M.D.*

Volume Rendering Technique vs. Maximum Intensity vs. Multi Planar Reformation: Principles, Pearls, and Pitfalls & Workstation Demonstration

*Elliot K. Fishman, M.D., FACR*

3D Imaging of the Liver

*Elliot K. Fishman, M.D., FACR*

## PROGRAM 13

Cystic Tumors of the Pancreas

*Jorge A. Soto, M.D.*

MDCT of Biliary Tract Emergencies

*Jorge A. Soto, M.D.*

MDCT Imaging of Pancreatic Carcinoma

*W. Dennis Foley, M.D.*

## PROGRAM 14

Image-Guided Percutaneous Biopsies in the Abdomen and Pelvis

*Rendon C. Nelson, M.D., FACR*

CT/CT Angiography of Mesenteric Ischemia

*W. Dennis Foley, M.D.*

CT and Radiation: A Primer for Radiologists

*Donald P. Frush, M.D., FACR, FAAP*

## PROGRAM 15

MDCT Perfusion Imaging of Solid Tumors

*Michael W. Vannier, M.D.*

Multislice CT of Appendicitis

*Ashok K. Gupta, M.D.*

Multislice CT of the Kidneys

*W. Dennis Foley, M.D.*

Management of the Incidental Adenexal Mass

Noted on Multislice CT

*Ashok K. Gupta, M.D.*

Faculty & topics subject to change.

## ORDER ONLINE AND SAVE

For every dollar spent through Educational Symposia's website an ESI POINT is earned. Use points towards future meeting registrations or DVD orders. Visit [www.edusymp.com](http://www.edusymp.com) and click on the Help Center tab to learn more and sign up to start earning ESI POINTS Today!



## **NEW** DVD CME Packs

Educational Symposia is constantly exploring ways to better serve our customers. Subscribers of our DVD CME teaching programs asked for a simpler way to share a DVD Teaching Program. We listened and are excited to introduce the **DVD CME Pack**.

Here's how it works. Purchase the original DVD teaching program then order as many **DVD CME Packs** as needed at a significantly reduced price. It really is that simple!

Educational Symposia's innovative **DVD CME Packs** allow each participating physician to own his/her set of DVDs. Having their own set provides the opportunity to view at their convenience and add to their personal reference library. **DVD CME Packs** are priced to make it a practical alternative to "waiting in line" to receive the next DVD.

Each **DVD CME Pack** contains:

- An **entire set** of DVDs in a convenient case designed for durability and ease of access
- One CME application and test
- A one or two volume syllabus (depending on the series). Syllabus is included in the purchase price but is not enclosed in the DVD CME case.

See order form to order a **DVD CME Pack** for this series. To order a **DVD CME Pack** for a previously purchased DVD teaching program, visit us online at [www.edusymp.com](http://www.edusymp.com), call toll free (800) 338-5901.

### Multiple CME Subscribers.....

Educational Symposia DVD Teaching Programs are accredited for *AMA PRA Category 1 Credits™* for three years from the original release date. Once the initial order is placed, the number of CME applications and/or **DVD CME Packs** that can be ordered is limitless. Simply call (800) 338-5901 or access our website at [www.edusymp.com](http://www.edusymp.com) and reference the name of the person or facility of the originating order. See order form for pricing.

## Cancellation Policy

If you are not satisfied with your purchase, you may return your purchase (or any portion of your purchase) within 15 days of receiving it. You will receive a refund for the portion that is returned, less a \$65.00 fee (\$50.00 processing fee and a \$15.00 standard shipping charge). If you are returning/cancelling multiple DVD series, please note the \$65 fee applies to each series. If your purchase was sent express, the additional shipping charges will NOT be refunded. No refunds can be made after 15 days. All cancellations must be in writing. CME credit cannot be granted on the portion of the purchase that is returned.



## 4 EASY WAYS TO ORDER

WE ACCEPT:



### Internet

Order online & **SAVE!** using your credit card number at: <http://www.edusymp.com>

*\*See order form for details.*



**SECURE WEBSITE**

### Mail

your order form, along with your credit card number and signature or check payable to Educational Symposia, to:

**Educational Symposia**  
5620 West Sligh Avenue  
Tampa, Florida 33634-4490

### Fax

your order form to: (800) 344-0668 (toll-free, U.S. & Canada) or (813) 806-1001 (direct). Please include your MasterCard, VISA, NOVUS/Discover Card or American Express information, including a signature.

**Phone** (800) 338-5901 (toll-free, U.S. & Canada) or (813) 806-1000 (direct). Please have your MasterCard, VISA, NOVUS/Discover Card or American Express information available.

## MAILING LIST OPTIONS

Reduce Your Mail Clutter!

Or Just Add E-mail Announcements!

We are pleased to be able to send you brochures by e-mail informing you of our latest meetings and CME programs. You have the choice of providing your e-mail address, your mailing address or both to receive the brochures. Visit the "Mailing List" section of our website to subscribe ([www.edusymp.com](http://www.edusymp.com)) or call 1-800-338-5901 and please tell us that you wish to receive brochure announcements by e-mail, mail or both.

# 2009 Classic Lectures in Body Imaging with MR & CT

**SUPERIOR IMAGE QUALITY**

## MR

16 AMA PRA  
Category 1 Credits™

## CT

30 AMA PRA  
Category 1 Credits™

**ORDER BOTH SETS & SAVE!** →

# BOTH SETS ..... \$2,495

- MR - ENTIRE SET** ..... \$1,195
- PROGRAM 1 ..... \$225     PROGRAM 5 ..... \$225
- PROGRAM 2 ..... \$225     PROGRAM 6 ..... \$225
- PROGRAM 3 ..... \$225     PROGRAM 7 ..... \$225
- PROGRAM 4 ..... \$225     PROGRAM 8 ..... \$225

- CT - ENTIRE SET** ..... \$1,995
- PROGRAM 1 ..... \$225     PROGRAM 9 ..... \$225
- PROGRAM 2 ..... \$225     PROGRAM 10 ..... \$225
- PROGRAM 3 ..... \$225     PROGRAM 11 ..... \$225
- PROGRAM 4 ..... \$225     PROGRAM 12 ..... \$225
- PROGRAM 5 ..... \$225     PROGRAM 13 ..... \$225
- PROGRAM 6 ..... \$225     PROGRAM 14 ..... \$225
- PROGRAM 7 ..... \$225     PROGRAM 15 ..... \$225
- PROGRAM 8 ..... \$225

**FREE SYLLABUS** with purchase of each entire set

Price includes standard shipping (FedEx Ground) & handling charges within the continental United States.

Payment must be in U.S. dollars.

Additional Syllabus: MR \_\_\_\_\_ at \$65.00 Each    CT \_\_\_\_\_ at \$95.00 Each \_\_\_\_\_

For orders sent to a Florida address, please add 7% sales tax \_\_\_\_\_

For orders sent to a California address, please add 8.25% sales tax \_\_\_\_\_

**NEW** Number of DVD CME Packs requested: MR \_\_\_\_\_ at \$225 Each    CT \_\_\_\_\_ at \$275 Each \_\_\_\_\_

Optional FedEx Shipping Methods:  Priority Overnight\* (\$75)  2nd Day\* (\$45)  3rd Day\* (\$30) \_\_\_\_\_  
\*Delivery times are business days only.

For orders shipped outside the United States, Canada or Mexico, add \$175 for shipping \_\_\_\_\_

Number of MR CME applications (1 CME application per person) \_\_\_\_\_ at \$75 each \_\_\_\_\_

Number of CT CME applications (1 CME application per person) \_\_\_\_\_ at \$75 each \_\_\_\_\_

Number of Both MR & CT CME applications (**SAVE 20%**) (1 CME application per person) \_\_\_\_\_ at \$120 each \_\_\_\_\_

CME is not included in the purchase price.

**TOTALS** \_\_\_\_\_

**\*\*ORDER ONLINE AND SAVE:** Save \$20 by providing the Brochure Code on the mail panel just above your name (only the last two digits before the number symbol # are needed)\*\*

**ORDER BY CREDIT CARD** Fax (800) 344-0668 or call (800) 338-5901 (toll-free, U.S. & Canada)

Name \_\_\_\_\_ CLBMV09 / CLBCV09

Degree  M.D.     D.O.     Ph.D.     RDMS     Other \_\_\_\_\_

Specialty \_\_\_\_\_

Facility/Organization \_\_\_\_\_ Dept. \_\_\_\_\_

Street Address  HOME  OFFICE \_\_\_\_\_

Sorry, No P.O. Boxes. We cannot be responsible for nondelivery when we receive an incorrect address. We ship FedEx when possible. Signature required.





City \_\_\_\_\_ State \_\_\_\_\_ Zip \_\_\_\_\_

Phone \_\_\_\_\_ Fax \_\_\_\_\_

**If you wish to receive email notification of your FedEx shipment, please provide your email address.**

E-mail \_\_\_\_\_

**HOW WOULD YOU LIKE TO RECEIVE FUTURE MEETING AND DVD ANNOUNCEMENTS?**     Mail Only     E-mail Only     Both Mail and E-mail

**PAYMENT INFORMATION:**  Check Enclosed     Charge to Credit Card:        

Payable to: Educational Symposia

Card Number \_\_\_\_\_ Expires \_\_\_\_\_

Card Security Code\* \_\_\_\_\_ \*In order to process your registration we will need the security code on your credit card. If you have a Mastercard, Visa or Discover the 3 digit code will be found on the back of your card in the space provided for your signature (it will be the last 3 digits shown). American Express prints their 4 digit security code on the front of the card above the last digit of your AMEX number.

Signature \_\_\_\_\_ (Your signature is your authorization to charge this credit card.)

**IF CREDIT CARD NAME OR BILLING ADDRESS DIFFERS FROM THE ADDRESS LISTED ABOVE, PLEASE PROVIDE THE CORRECT BILLING ADDRESS**

Name on Card \_\_\_\_\_

Billing Address \_\_\_\_\_

City \_\_\_\_\_ State \_\_\_\_\_ Zip \_\_\_\_\_