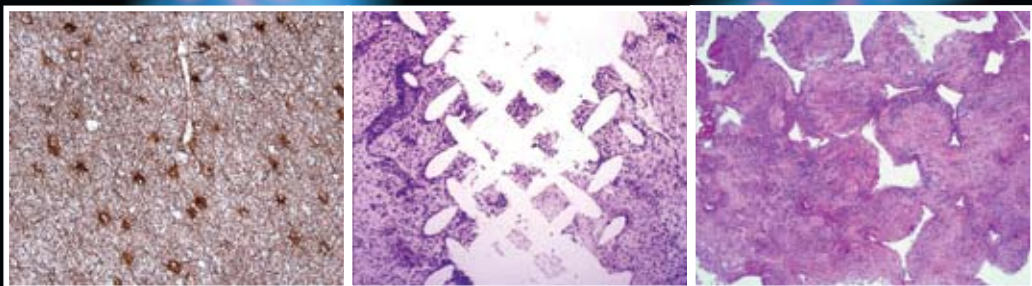


## DVD Teaching Programs



### **2011 Pathology Review:**

Pulmonary Pathology, Neuropathology and Cytopathology:  
A Pattern-Based Approach to Diagnosis

9.5 *AMA PRA Category 1 Credit(s)*<sup>TM</sup> • Release Date: May 1, 2011

### **2010 Pathology Review:**

Genitourinary, Gynecologic and Cytopathology

15 *AMA PRA Category 1 Credit(s)*<sup>TM</sup> • Original Release Date: April 1, 2010

### **2009 Pathology Review:**

Head and Neck Pathology, Hot Topics in  
Surgical Pathology and Dermatopathology

14 *AMA PRA Category 1 Credit(s)*<sup>TM</sup> • Original Release Date: April 15, 2009

**Superior Image Quality**  
FREE SYLLABUS with purchase of entire set



**Educational Symposia**

# 2011 Pathology Review:

## Pulmonary Pathology, Neuropathology and Cytopathology: A Pattern-Based Approach to Diagnosis

### About this DVD Series

This DVD teaching program is designed to provide a comprehensive review of pulmonary pathology, neuropathology and cytopathology. Faculty discuss basic to advanced techniques as well as pitfalls and pearls to pathology diagnosis. Rounding out the program is an interactive case review of neuropathology, pulmonary pathology and cytopathology emphasizing the pattern-based approach to pathologic diagnosis.

### Target Audience

This CME activity is primarily intended and designed to educate pathologists.

### Scientific Sponsor

Educational Symposia

This DVD series was planned and produced by Educational Symposia, a leader in continuing medical education since 1975.

This DVD series was planned and produced in accordance with the ACCME Essential Areas and Elements.

### Accreditation

**Physicians:** Educational Symposia is accredited by the Accreditation Council for Continuing Medical Education (ACCME) to sponsor continuing medical education for physicians.

Educational Symposia designates this enduring material for a maximum of 9.5 *AMA PRA Category 1 Credit(s)*<sup>TM</sup>. Physicians should claim only the credit commensurate with the extent of their participation in the activity.

DVDs 1-4 are each designated for two category 1 credits. DVD 5 is designated for 1.5 category one credits. The time necessary to complete the series is 9.5 hours. The time necessary to complete DVDs 1-4 is two hours. The time necessary to complete DVD 5 is 1.5 hours.

All DVD course participants are required to take a test in order to be awarded credit. (Exam materials, if ordered, will be sent with your DVD order.) All DVD course participants will also have the opportunity to critically evaluate the program as it relates to practice relevance and educational objectives.

**AMA PRA Category 1 Credit(s)<sup>TM</sup> for these programs may be claimed until April 30, 2014.**

DVD teaching programs feature a distinctive production process termed "Digital Studio Enhancement" including:

- Post processed diagnostic images
- Improved graphic and text legibility
- Clearly visible pathology and anatomy
- Electronic pointer correlation with speaker's indications

This production process is exclusive to Educational Symposia DVD programs.

### Educational Objectives

At the completion of this DVD CME series, subscribers should be able to:

- Use a pattern-based approach for pathologic diagnosis of pulmonary disease, neuropathology and cytopathology.
- Recognize, assess and more accurately evaluate clinical, radiologic and pathologic patterns in pulmonary disease including transbronchial biopsies, lung cancer and inflammatory lung disease.
- Recognize and more accurately assess common pitfalls in surgical neuropathology.
- Make more accurate neuropathology diagnoses using clinical, radiologic and pathologic patterns.
- Use a pattern based approach to evaluate focused organ system disease.
- More accurately diagnose and evaluate cytopathology in fine needle aspiration biopsies.
- Increase understanding of pulmonary pathology, cytopathology and neuropathology.

*No special educational preparation is required for this CME activity.*

## Faculty

### Kevin Leslie, M.D.

*Chair, Division of Anatomic Pathology  
Department of Laboratory Medicine  
and Pathology  
Mayo Clinic Arizona  
Scottsdale, AZ  
Professor of Pathology  
Mayo Clinic College of Medicine  
Rochester, MN*

### Arie Perry, M.D.

*Professor  
Departments of Pathology and  
Neurological Surgery  
Director, Division of Neuropathology  
University of California San Francisco  
(UCSF)  
San Francisco, CA*

### Matthew A. Zarka, M.D.

*Director of Cytopathology  
Assistant Professor  
Laboratory Medicine and Pathology  
Mayo Clinic Arizona  
Scottsdale, AZ*

## Program

### PROGRAM 1

FNA: A Practical Architectural  
Pattern Recognition Approach  
With Emphasis on Head and Neck  
*Matthew A. Zarka, M.D.*

Common Pitfalls In Surgical  
Neuropathology  
(continued on program 2)  
*Arie Perry, M.D.*

### PROGRAM 2

Common Pitfalls In Surgical  
Neuropathology / Multiple Sclerosis  
Song (continuation)  
*Arie Perry, M.D.*

Clinical Radiological and  
Pathologic Patterns In Surgical  
Neuropathology  
*Arie Perry, M.D.*

A Practical Approach to Interstitial  
Lung Disease: Clinical, Radiological  
and Histopathological Patterns  
*Kevin Leslie, M.D.*

Diagnostic Utility of the  
Transbronchial Biopsy  
(continued on program 3)  
*Kevin Leslie, M.D.*

### PROGRAM 3

Diagnostic Utility of the  
Transbronchial Biopsy (continuation)  
*Kevin Leslie, M.D.*

The Pathologist Role In Diagnosis  
Staging and Selection of Targeted  
Therapies  
*Kevin Leslie, M.D.*

FNA Case Presentations - I  
*Matthew A. Zarka, M.D.*

FNA Case Presentations - II  
*Matthew A. Zarka, M.D.*

### PROGRAM 4

FNA Case Presentations - III  
*Matthew A. Zarka, M.D.*

Neuropathology Case  
Presentations / Astrocytic  
Tumors Song  
*Arie Perry, M.D.*

Neuropathology Case  
Presentations / Oligodendroglioma  
Song  
*Arie Perry, M.D.*

Neuropathology Case  
Presentations / Meningiomas Song  
*Arie Perry, M.D.*

Neuropathology Case  
Presentations / Creutzfeldt -  
Jacob Disease Song  
*Arie Perry, M.D.*

### PROGRAM 5

Accredited for  
1.5 AMA PRA Category 1 Credit(s)<sup>TM</sup>

Neoplastic and Inflammatory Lung  
Disease Case Presentations - I  
*Kevin Leslie, M.D.*

Neoplastic and Inflammatory Lung  
Disease Case Presentations - II  
*Kevin Leslie, M.D.*

Neoplastic and Inflammatory Lung  
Disease Case Presentations - III  
*Kevin Leslie, M.D.*

Neoplastic and Inflammatory Lung  
Disease Case Presentations - IV  
*Kevin Leslie, M.D.*

# 2010 Pathology Review:

## Genitourinary, Gynecologic and Cytopathology

### About this DVD Series

This DVD teaching program is designed to provide a comprehensive review of prostate, bladder and testicular pathology. In addition, a detailed review of gynecologic tumors and cytopathology of the head and neck will complete the program.

### Target Audience

This CME activity is primarily intended and designed to educate pathologists.

### Scientific Sponsor

Educational Symposia

This DVD series was planned and produced by Educational Symposia, a leader in continuing medical education since 1975.

This DVD series was planned and produced in accordance with the ACCME Essential Areas and Elements.

### Accreditation

**Physicians:** Educational Symposia is accredited by the Accreditation Council for Continuing Medical Education (ACCME) to sponsor continuing medical education for physicians.

Educational Symposia designates this educational activity for a maximum of 15 *AMA PRA Category 1 Credit(s)*<sup>TM</sup>. Physicians should only claim credit commensurate with the extent of their participation in the activity.

DVDs 1 through 7 are designated for two category 1 credits each; DVD 8 is designated for one category 1 credit. The time necessary to complete the series is 15 hours. The time necessary to complete DVDs 1 through 7 is two hours each; the time necessary to complete DVD 8 is one hour.

All DVD course participants are required to take a test in order to be awarded credit. (Exam materials, if ordered, will be sent with your DVD order.) All DVD course participants will also have the opportunity to critically evaluate the program as it relates to practice relevance and educational objectives.

**AMA PRA Category 1 Credit(s)<sup>TM</sup> for these programs may be claimed until March 31, 2013.**

DVD teaching programs feature a distinctive production process termed "Digital Studio Enhancement" including:

- Post processed diagnostic images
- Improved graphic and text legibility
- Clearly visible pathology and anatomy
- Electronic pointer correlation with speaker's indications

This production process is exclusive to Educational Symposia DVD programs.

### Educational Objectives

At the completion of this DVD CME series, subscribers should be able to:

- Recognize, assess and more accurately evaluate adenocarcinoma of the prostate, intraepithelial neoplasia of the prostate and radical prostatectomy specimens.
- Classify, diagnose and differentiate urothelial neoplasms.
- Recognize and more accurately assess benign and malignant cervical lesions, surface epithelial tumors and metastatic tumors of the ovaries.
- More accurately diagnose endometrial carcinoma and review problems of diagnosis.
- More accurately diagnose and evaluate tumors of the fallopian tube and broad ligament.
- Recognize pitfalls in the diagnosis of testicular tumors.
- Increase understanding of head and neck cytopathology and fine needle aspirations in lymphoma diagnosis.

*No special educational preparation is required for this CME activity.*

## Faculty

**Jonathan I. Epstein, M.D.**  
*Professor, Departments of Pathology,  
Urology & Oncology  
The Reinhard Professor of Urologic  
Pathology  
Johns Hopkins Medical Institutions  
Director of Surgical Pathology  
Director of Anatomic Pathology  
Consult Service  
Department of Pathology, Johns  
Hopkins Hospital*

**Paul E. Wakely, Jr., M.D.**  
*Department of Pathology  
Medical College of Wisconsin  
Milwaukee, WI*

**Robert H. Young, M.D.,  
FRCPATH**  
*Robert E. Scully Professor of Pathology  
Harvard Medical School  
Pathologist, Massachusetts General  
Hospital*

## Program

### PROGRAM 1

Diagnosis of Limited  
Adenocarcinoma of the  
Prostate on Needle Biopsy  
*Jonathan I. Epstein, M.D.*

Prostatic Intraepithelial Neoplasia:  
Diagnosis and Mimickers  
*Jonathan I. Epstein, M.D.*

Radical Prostatectomy: Processing,  
Evaluation, and Prognosis Related  
to Pathologic Findings  
(Continued on Program 2)  
*Jonathan I. Epstein, M.D.*

### PROGRAM 2

Radical Prostatectomy: Processing,  
Evaluation, and Prognosis Related  
to Pathologic Findings  
(Continued from Program 1)  
*Jonathan I. Epstein, M.D.*

Classification and Staging of  
Urothelial Neoplasms  
*Jonathan I. Epstein, M.D.*

Variants of Urothelial Carcinoma  
(Continued on Program 3)  
*Jonathan I. Epstein, M.D.*

### PROGRAM 3

Variants of Urothelial Carcinoma  
(Continued from Program 2)  
*Jonathan I. Epstein, M.D.*

Mimickers of Bladder Neoplasia  
*Jonathan I. Epstein, M.D.*

Benign Glandular Lesions of the  
Uterine Cervix  
(Continued on Program 4)  
*Robert H. Young, M.D., FRCPATH*

### PROGRAM 4

Benign Glandular Lesions of the  
Uterine Cervix  
(Continued from Program 3)  
*Robert H. Young, M.D., FRCPATH*

Selected Problems in the  
Differential Diagnosis of Surface  
Epithelial Tumors of the Ovary  
*Robert H. Young, M.D., FRCPATH*  
Metastatic Tumors to the Ovary  
(Continued on Program 5)  
*Robert H. Young, M.D., FRCPATH*

### PROGRAM 5

Metastatic Tumors to the Ovary  
(Continued from Program 4)  
*Robert H. Young, M.D., FRCPATH*

Problems in the Diagnosis of  
Endometrial Carcinoma  
*Robert H. Young, M.D., FRCPATH*

Adenocarcinoma and Other  
Cervical Glandular Neoplasms  
(Continued on Program 6)  
*Robert H. Young, M.D., FRCPATH*

### PROGRAM 6

Adenocarcinoma and Other  
Cervical Glandular Neoplasms  
(Continued from Program 5)  
*Robert H. Young, M.D., FRCPATH*

Tumors of the Fallopian Tube and  
Broad Ligament  
*Robert H. Young, M.D., FRCPATH*

Testicular Tumors: Pitfalls in  
Diagnosis  
(Continued on Program 7)  
*Robert H. Young, M.D., FRCPATH*

### PROGRAM 7

Testicular Tumors: Pitfalls in  
Diagnosis  
(Continued from Program 6)  
*Robert H. Young, M.D., FRCPATH*

Recent Developments in Thyroid  
Cytopathology  
*Paul E. Wakely, Jr., M.D.*

Pitfalls in Head and Neck  
Cytopathology  
(Continued on Program 8)  
*Paul E. Wakely, Jr., M.D.*

### PROGRAM 8

Accredited for  
1 *AMA PRA Category 1 Credit(s)*<sup>TM</sup>

Pitfalls in Head and Neck  
Cytopathology  
(Continued from Program 7)  
*Paul E. Wakely, Jr., M.D.*

The Role of Fine-Needle  
Aspiration in Lymphoma  
Diagnosis  
*Paul E. Wakely, Jr., M.D.*

# 2009 Pathology Review:

Head and Neck Pathology, Hot Topics in Surgical Pathology and Dermatopathology

## About this DVD Series

This DVD teaching program focuses on improving the quality of diagnosis and consulting in pathology. The topics have been selected through the review of evaluations submitted from previous pathology symposia and faculty perception.

## Target Audience

This DVD CME activity is primarily intended and designed to educate pathologists.

## Scientific Sponsor

Educational Symposia

This DVD series was planned and produced by Educational Symposia, a leader in continuing medical education since 1975.

This DVD series was planned and produced in accordance with the ACCME Essential Areas and Elements.

## Accreditation

**Physicians:** Educational Symposia is accredited by the Accreditation Council for Continuing Medical Education (ACCME) to sponsor continuing medical education for physicians.

Educational Symposia designates this educational activity for a maximum of 14 *AMA PRA Category 1 Credit(s)*<sup>TM</sup>. Physicians should only claim credit commensurate with the extent of their participation in the activity.

Each DVD is designated for two category 1 credits. The time necessary to complete the series is 14 hours. The time necessary to complete each DVD is two hours.

All DVD course participants are required to take a test in order to be awarded credit. (Exam materials, if ordered, will be sent with your DVD order.) All DVD course participants will also have the opportunity to critically evaluate the program as it relates to practice relevance and educational objectives.

**AMA PRA Category 1 Credit(s)<sup>TM</sup> for these programs may be claimed until April 14, 2012.**

DVD teaching programs feature a distinctive production process termed “Digital Studio Enhancement” including:

- Post processed diagnostic images
- Improved graphic and text legibility
- Clearly visible pathology and anatomy
- Electronic pointer correlation with speaker's indications

This production process is exclusive to Educational Symposia DVD programs.

## Educational Objectives

At the completion of this DVD CME series, subscribers should be able to:

- Recognize and more accurately diagnose thyroid gland pathology, squamous cell carcinomas of the head and neck and salivary gland pathology.
- Accurately assess pleuropulmonary tumors, neuroendocrine neoplasia and metastatic carcinoma of unknown origin.
- Have a more complete understanding of immunohistology in neoplastic dermatopathology, melanocytic lesions that may stimulate melanoma and adnexal tumors of the skin.
- Recognize and more accurately diagnose inflammatory, neoplastic, vascular and infectious skin disease including cutaneous lymphomas.
- Discuss the legal consequences associated with dermatopathology and how to avoid them.

*No special educational preparation is required for this CME activity.*

## Faculty

**Philip E. LeBoit, M.D.**

*Professor of Clinical Pathology and  
Dermatology  
Co-Director, UCSF Dermatopathology  
Service  
San Francisco, CA*

**Bruce M. Wenig, M.D.**

*Chairman  
Department of Pathology and  
Laboratory Medicine  
Beth Israel Medical Center and St.  
Luke's and Roosevelt Hospitals  
Professor of Pathology  
Albert Einstein College of Medicine  
New York, NY*

**Mark R. Wick, M.D.**

*Professor of Pathology  
University of Virginia Medical Center  
Charlottesville, VA*

## Program

### PROGRAM 1

Controversial Issues in Thyroid  
Gland Pathology

*Bruce M. Wenig, M.D.*

Squamous Cell Carcinoma of the  
Head and Neck

*Bruce M. Wenig, M.D.*

### PROGRAM 2

Selected Topics in Salivary  
Gland Pathology

*Bruce M. Wenig, M.D.*

Benign and Borderline  
Pleuropulmonary Tumors

(continued on program 3)  
*Mark R. Wick, M.D.*

### PROGRAM 3

Benign and Borderline  
Pleuropulmonary Tumors

(continued from program 2)  
*Mark R. Wick, M.D.*

Neuroendocrine Neoplasia:  
An Update

*Mark R. Wick, M.D.*

Metastatic Carcinoma of  
Unknown Origin

*Mark R. Wick, M.D.*

### PROGRAM 4

Benign Melanocytic Lesions That  
May Simulate Melanoma

*Mark R. Wick, M.D.*

Immunohistochemistry in Neoplastic  
Dermatopathology: An Update

*Mark R. Wick, M.D.*

Adnexal Tumors of the Skin

(Continued on program 5)  
*Mark R. Wick, M.D.*

### PROGRAM 5

Adnexal Tumors of the Skin

(Continued from program 4)  
*Mark R. Wick, M.D.*

Inflammatory Skin Disease for  
the Disaffected

Non-Dermatopathologist  
*Philip E. LeBoit, M.D.*

The Changing World of  
Melanocytic Neoplasia

(Continued on program 6)  
*Philip E. LeBoit, M.D.*

### PROGRAM 6

The Changing World of  
Melanocytic Neoplasia

(Continued from program 5)  
*Philip E. LeBoit, M.D.*

“Oma” or “Itis”: Cutaneous  
Lymphomas and their Simulants

*Philip E. LeBoit, M.D.*

Vascular Proliferations of the Skin

(continued on program 7)  
*Philip E. LeBoit, M.D.*

### PROGRAM 7

Vascular Proliferations of the Skin

(continued from program 6)  
*Philip E. LeBoit, M.D.*

Infectious and Opportunistic  
Dermatopathology

*Philip E. LeBoit, M.D.*

Dermatopathology in the  
Courtroom (and How to  
Avoid Being There)

*Philip E. LeBoit, M.D.*

Please send the following checked items:

- 20% OFF** Purchase Three Sets: 2011, 2010, 2009..... ~~\$2885~~ ..... **\$2308**
- 15% OFF** Purchase Two Sets: 2011 & 2010 or 2009 ..... ~~\$1890~~ ..... **\$1606**
- 15% OFF** Purchase Two Sets: 2010 & 2009 ..... ~~\$1990~~ ..... **\$1690**

**2011 PATHOLOGY REVIEW**

- ENTIRE SET** ..... **\$895**
- PROGRAM 1** ..... **\$225**
- PROGRAM 2** ..... **\$225**
- PROGRAM 3** ..... **\$225**
- PROGRAM 4** ..... **\$225**
- PROGRAM 5\*** ..... **\$175**

\*Accredited for 1.5 AMA PRA Category 1 Credit(s)<sup>TM</sup>

Please see specific programs for Expiration Date of Accreditation

Price includes standard shipping (FedEx Ground) & handling charges within the continental United States.

Payment must be in U.S. dollars.

**2010 PATHOLOGY REVIEW**

- ENTIRE SET** ..... **\$995**
- PROGRAM 1** ..... **\$225**
- PROGRAM 2** ..... **\$225**
- PROGRAM 3** ..... **\$225**
- PROGRAM 4** ..... **\$225**
- PROGRAM 5** ..... **\$225**
- PROGRAM 6** ..... **\$225**
- PROGRAM 7** ..... **\$225**
- PROGRAM 8\*** ..... **\$125**

\*Accredited for 1 AMA PRA Category 1 Credit(s)<sup>TM</sup>

**2009 PATHOLOGY REVIEW**

- ENTIRE SET** ..... **\$995**
- PROGRAM 1** ..... **\$225**
- PROGRAM 2** ..... **\$225**
- PROGRAM 3** ..... **\$225**
- PROGRAM 4** ..... **\$225**
- PROGRAM 5** ..... **\$225**
- PROGRAM 6** ..... **\$225**
- PROGRAM 7** ..... **\$225**

Additional Syllabus  2011 \_\_\_\_\_  2010 \_\_\_\_\_  2009 \_\_\_\_\_ at \$65.00 Each \_\_\_\_\_

For orders sent to a Florida address, please add 7% sales tax \_\_\_\_\_

For orders sent to a California address, please add 8.75% sales tax \_\_\_\_\_

Number of DVD CME Packs requested  2011 \_\_\_\_\_ at \$295 each  2010 \_\_\_\_\_ at \$225 each  2009 \_\_\_\_\_ at \$165 each \_\_\_\_\_

Optional FedEx Shipping Methods:  Priority Overnight\* (\$75)  2nd Day\* (\$45)  3rd Day\* (\$30) \_\_\_\_\_

\*Delivery times are business days only.

For orders shipped to Canada add \$75 for shipping \_\_\_\_\_

For orders shipped outside the United States, Canada or Mexico, add \$175 for shipping \_\_\_\_\_

Number of CME applications requested  2011 \_\_\_\_\_ at \$95 each  2010 \_\_\_\_\_ at \$95 each  2009 \_\_\_\_\_ at \$75 each \_\_\_\_\_

(1 CME application required per person)

CME is not included in the purchase price.

**TOTAL**

**\*\*ORDER ONLINE AND SAVE: Save \$20 by providing the Brochure Code on the mail panel just above your name (only the last three digits before the number symbol # are needed).\*\***

**ORDER BY CREDIT CARD** Fax (800) 344-0668 or call (800) 338-5901 (toll-free, U.S. & Canada)

Name \_\_\_\_\_ PATHV11

*First Middle Last*

Degree  M.D.  D.O.  Ph.D.  PA  Other \_\_\_\_\_

Specialty \_\_\_\_\_

Facility/Organization \_\_\_\_\_ Dept. \_\_\_\_\_

HOME  OFFICE

Street Address \_\_\_\_\_

*Sorry, No P.O. Boxes. We cannot be responsible for nondelivery when we receive an incorrect address. We ship FedEx when possible. Signature required.*

City \_\_\_\_\_ State \_\_\_\_\_ Zip \_\_\_\_\_

Phone \_\_\_\_\_ Fax \_\_\_\_\_ E-mail \_\_\_\_\_

Mail Brochure Panel Code \_\_\_\_\_

If you wish to receive email notification of your FedEx shipment, please provide your email address.

HOW WOULD YOU LIKE TO RECEIVE FUTURE MEETING AND DVD ANNOUNCEMENTS?  Mail Only  E-mail Only  Both Mail and E-mail

**PAYMENT INFORMATION - If credit card name or billing address differs from the address listed above please provide the correct billing address.**

Check Enclosed (Payable to: Educational Symposia)  Charge to Credit Card:    

Card Number \_\_\_\_\_ Expires \_\_\_\_\_

Card Security Code\* \_\_\_\_\_ \*MasterCard, Visa and Discover: The last 3 Digits printed in signature space on card back. American Express: 4 Digits above account number on card front.

Signature \_\_\_\_\_ (Your signature is your authorization to charge this credit card)

Name on Card \_\_\_\_\_

Billing Address \_\_\_\_\_

City \_\_\_\_\_ State \_\_\_\_\_ Zip \_\_\_\_\_

## DVD CME Packs

Here's how it works. Purchase the original DVD teaching program then order as many **DVD CME Packs** as needed at a significantly reduced price. It really is that simple!

Educational Symposia's innovative **DVD CME Packs** allow each participating physician to own his/her set of DVDs. A personal set provides the opportunity to view at one's own convenience and adds to a personal reference library. **DVD CME Packs** are priced to make it a practical alternative to "waiting in line" to receive the next DVD.



Each **DVD CME Pack** contains:

- An **entire set** of DVDs in a convenient case designed for durability and ease of access
- One CME application and test
- A one or two volume syllabus (depending on the series). Syllabus is included in the purchase price but is not enclosed in the DVD CME case.

See order form to order a **DVD CME Pack** for this series. To order a **DVD CME Pack** for a previously purchased DVD teaching program, visit us online at [www.edusymp.com](http://www.edusymp.com), or call toll free (800) 338-5901.

## Multiple CME Subscribers.....

Educational Symposia DVD Teaching Programs are accredited for **AMA PRA Category 1 Credit(s)<sup>TM</sup>** for three years from the original release date. Once the initial order is placed, the number of CME applications and/or **DVD CME Packs** that can be ordered is limitless. Simply call (800) 338-5901 or access our website at [www.edusymp.com](http://www.edusymp.com) and reference the name of the person or facility of the originating order. See order form for pricing.

## Cancellation Policy

If you are not satisfied with your purchase, you may return your purchase (or any portion of your purchase) within 15 days of receiving it. You will receive a refund for the portion that is returned, less a \$125.00 processing fee. If you are returning/cancelling multiple DVD series, please note the \$125.00 processing fee applies to each series. If your purchase was sent express, the additional shipping charges will **NOT** be refunded. No refunds can be made after 15 days. All cancellations must be in writing. CME credit cannot be granted on the portion of the purchase that is returned. Abuse of this cancellation policy (2 or more returns) renders the cancellation policy void. There are no refunds for DVD CME Packs.

## 4 EASY WAYS TO ORDER

WE ACCEPT:



### Internet

**SECURE WEBSITE**

Order online & SAVE! using your credit card number at: <https://www.edusymp.com>

*\*See order form for details.*

**Mail** your order form, along with your credit card number and signature or check payable to Educational Symposia, to:

Educational Symposia  
5620 West Sligh Avenue  
Tampa, Florida 33634-4490

**Fax** your order form to: (800) 344-0668 (toll-free, U.S. & Canada) or (813) 806-1001 (direct). Please include your MasterCard, VISA, NOVUS/Discover Card or American Express information, including a signature.

**Phone** (800) 338-5901 (toll-free, U.S. & Canada) or (813) 806-1000 (direct). Please have your MasterCard, VISA, NOVUS/Discover Card or American Express information available.

## Mailing List Options

Reduce Your Mail Clutter!

Or Just Add E-mail Announcements!

We are pleased to be able to send you brochures by e-mail informing you of our latest meetings and CME programs. You have the choice of providing your e-mail address, your mailing address or both to receive the brochures. Visit the "Mailing List" section of our website to subscribe ([www.edusymp.com](http://www.edusymp.com)) or call 1-800-338-5901 and please tell us that you wish to receive brochure announcements by e-mail, mail or both.

**ORDER ONLINE AND SAVE:** For every dollar spent through Educational Symposia's website an ESI POINT is earned. Use points toward future meeting registrations or DVD orders. Visit [www.edusymp.com](http://www.edusymp.com) and click on the Help Center tab to learn more and sign up to start earning ESI POINTS Today!



# 2012

SAVE THE DATE  
**PATHOLOGY  
SYMPOSIUM**

February 12-18, 2012 • Snowmass Village