

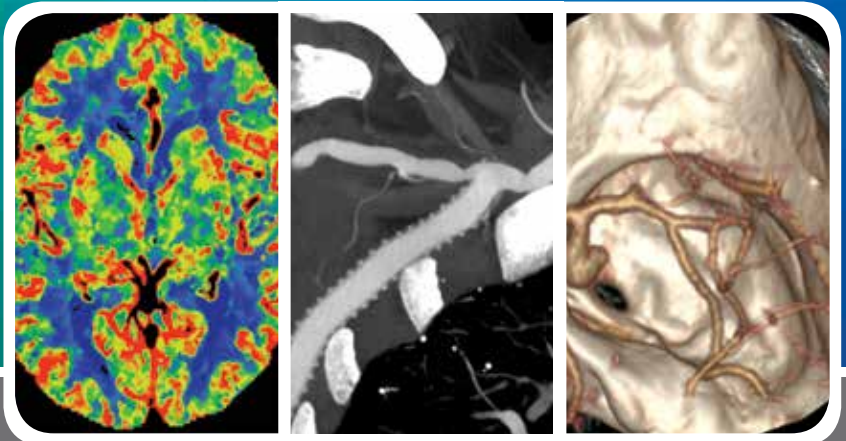
AVAILABLE NOW  
**ON-DEMAND,**  
USB, OR DVD

A CME Teaching Activity

# American Society of Head & Neck Radiology

Head and Neck Imaging - Current and Future

**Designated for SA-CME**



22.0 AMA PRA Category 1 Credit(s)<sup>TM</sup>

Release Date: January 15, 2018

**ESI** Educational  
Symposia

docmed**ED**  
ESI ON-DEMAND

## About This CME Teaching Activity

This CME teaching activity provides a broad review of head and neck imaging. Speakers present content-rich, clinically relevant materials on head and neck anatomy, nodal metastases, head and neck cancer staging, cranial nerve imaging, sinonasal imaging, and skull base imaging. In addition, pediatric head and neck imaging, parathyroid imaging, and surveillance imaging for head and neck cancer patients is included. Material contained in this product was captured during the 2014 ASHNR live meeting.

## Target Audience

This CME teaching activity is designed to educate radiologists, neuroradiologists, dental and oral-maxillofacial practitioner, ENT physicians, head and neck surgeons, medical and radiation oncologists, general surgeons with other healthcare professionals interested in head and neck pathology, treatment and imaging.

## Scientific Sponsor

Educational Symposia

## Accreditation

**Physicians:** Educational Symposia is accredited by the Accreditation Council for Continuing Medical Education (ACCME) to provide continuing medical education for physicians.

Educational Symposia designates this enduring material for a maximum of 22.0 *AMA PRA Category 1 Credit(s)*<sup>™</sup>. Physicians should claim only the credit commensurate with the extent of their participation in the activity.

**SA-CME:** Credits awarded for this enduring activity are designated “SA-CME” by the American Board of Radiology (ABR) and qualify toward fulfilling requirements for Maintenance of Certification (MOC) Part II: Life Long Learning and Self-assessment.

All activity participants are required to pass a written or online test with a minimum score of 70% in order to be awarded credit. (Exam materials, if ordered, will be sent with your order.) All course participants will also have the opportunity to critically evaluate the program as it relates to practice relevance and educational objectives.

**AMA PRA Category 1 Credit(s)<sup>™</sup> for this activity may be claimed until January 14, 2021.**

This CME activity was planned and produced by Educational Symposia,  
the leader in diagnostic imaging education since 1975.

This activity was planned and produced in accordance with the ACCME Essential Areas and Elements.

## Educational Objectives

At the completion of this CME teaching activity, you should be able to:

- Identify the anatomy of temporal bone, skull base, suprahyoid neck, and infrahyoid neck.
- Describe the lymphatic drainage and patterns of metastases.
- Review the anatomy of cranial nerves and clinical presentation of various pathologies affecting cranial nerves.
- Identify the imaging features and clinical significance of perineural tumor spread.
- Describe the common infectious and inflammatory process that involve the sinonasal region.
- Describe the clinical applications and indications of perfusion and diffusion imaging of head and neck tumor.
- Review current strategies for dose reduction for CT examination for head and neck.
- Discuss the benefit and limitations of PET/CT imaging for head and neck cancer.
- Recognize imaging features of various developmental and odontogenic maxillofacial lesions.

*No special educational preparation is required for this CME activity.*

# Faculty

---

## James J. Abrahams, M.D.

*Professor of Diagnostic Radiology & Surgery  
(Otolaryngology)*

*Director, Neuroradiology Fellowship  
Chief, ENT Radiology  
Yale University School of Medicine  
New Haven, CT*

## Ashley Hawk Aiken, M.D.

*Associate Professor  
Department of Radiology and Imaging Services  
Neuroradiology Division  
Program Director, Neuroradiology Fellowship  
Emory University School of Medicine  
Atlanta, GA*

## Yoshimi Anzai, M.D., MPH

*Professor of Radiology, Adjunct Professor of Otolaryngology  
Director of Neuroradiology  
University of Washington Medical Center  
Seattle, WA*

## Kristen Lloyd Baugnon, M.D.

*Assistant Professor  
Department of Radiology and Imaging Sciences  
Division of Neuroradiology  
Emory University School of Medicine  
Atlanta, GA*

## Norman J. Beauchamp, Jr., M.D., MHS

*Professor and Chair  
Department of Radiology  
University of Washington  
Seattle, WA*

## Ari M. Blitz, M.D.

*Assistant Professor, Neuroradiology  
Johns Hopkins Hospital  
Baltimore, MD*

## Barton F. Branstetter, IV, M.D.

*Chief of Neuroradiology  
Professor of Radiology, Otolaryngology, and  
Biomedical Informatics  
University of Pittsburgh Medical Center  
Pittsburgh, PA*

## Philip R. Chapman, M.D.

*Associate Professor  
Chief, Neuroradiology Section  
University of Alabama Birmingham  
Birmingham, AL*

## Rebecca S. Cornelius, M.D., FACR

*Professor of Radiology and Otolaryngology  
University of Cincinnati Medical Center  
Department of Radiology - Section of Neuroradiology  
Cincinnati, OH*

## Joel K. Cure, M.D.

*Professor, Department of Radiology  
Neuroradiology Section  
University of Alabama at Birmingham  
Birmingham, AL*

## Hugh D. Curtin, M.D.

*Chair of Radiology  
Massachusetts Eye and Ear Infirmary  
Professor of Radiology  
Harvard Medical School  
Boston, MA*

## Roberta W. Dalley, M.D.

*Associate Professor of Radiology  
University of Washington Medical Center  
Seattle, WA*

## H. Christian Davidson, M.D.

*Associate Professor of Radiology  
The University of Utah School of Medicine  
Salt Lake City, UT*

## Nancy J. Fischbein, M.D.

*Professor, Diagnostic Radiology and, by  
courtesy, Otolaryngology  
Head and Neck Surgery, Neurology & Neurological  
Sciences, and Neurosurgery  
Stanford University School of Medicine  
Stanford, CA*

## Neal Futran, M.D., D.M.D.

*Professor and Chair  
Dept. of Otolaryngology-HNS  
University of Washington  
Seattle, WA*

## Lindell R. Gentry, M.D., FACR

*Professor of Radiology  
Director, Head and Neck Imaging  
University of Wisconsin School of Medicine  
and Public Health  
Madison, WI*

*(Faculty Continued)*

# Faculty (continued)

---

## Lawrence E. Ginsberg, M.D.

*Professor of Radiology and Head and Neck Surgery  
The University of Texas MD Anderson Cancer Center  
Houston, TX*

## Christine M. Glastonbury, MBBS

*Professor of Clinical Radiology and Biomedical Imaging,  
Otolaryngology - Head and Neck Surgery, and  
Radiation Oncology  
University of California, San Francisco  
San Francisco, CA*

## John L. Go, M.D.

*Assistant Professor of Radiology and Otolaryngology  
Director of Head and Neck Imaging  
Keck School of Medicine  
University of Southern California  
Los Angeles, CA*

## Bronwyn E. Hamilton, M.D.

*Associate Professor, Neuroradiology  
Oregon Health and Science University  
Portland, OR*

## Jenny K. Hoang, MBBS

*Associate Professor of Radiology and Radiation Oncology  
Department of Radiology, Division of Neuroradiology  
Duke University Medical Center  
Durham, NC*

## Roy A. Holliday, M.D.

*Director of Radiology  
New York Eye & Ear Infirmary  
Clinical Professor of Radiology  
Icahn School of Medicine of Mount Sinai  
New York, NY*

## Michele H. Johnson, M.D.

*Professor of Radiology, Surgery (Otolaryngology),  
and Neurosurgery  
Director, Interventional Neuroradiology  
Department of Diagnostic Radiology  
Yale University School of Medicine  
New Haven, CT*

## Amy Fan-Yee Juliano, M.D.

*Instructor  
Department of Radiology  
Massachusetts Eye and Ear Infirmary  
Harvard Medical School  
Boston, MA*

## Hillary R. Kelly, M.D.

*Radiologist  
Massachusetts Eye and Ear Infirmary  
Neuroradiologist  
Massachusetts General Hospital  
Assistant Professor of Radiology  
Harvard Medical School  
Boston, MA*

## Claudia F.E. Kirsch, M.D.

*Associate Professor of Neuroradiology and Otolaryngology  
Section Chief Head and Neck Imaging  
Department Education Director for the Lead.Serve  
Inspire Curriculum  
Wexner Medical Center  
The Ohio State University College of Medicine*

## Bernadette L. Koch, M.D.

*Associate Director of Radiology  
Professor Radiology and Pediatrics  
Cincinnati Children's Hospital  
Cincinnati, OH*

## Lisa J. Koenig, BChD, DDS, MS

*Professor  
Program Director, Oral Medicine and Oral Radiology  
Marquette University School of Dentistry  
Milwaukee, WI*

## Laurie A. Loevner, M.D.

*Professor of Radiology, Otorhinolaryngology: Head and  
Neck Surgery, and Neurosurgery  
Chief, Division of Neuroradiology  
University of Pennsylvania Health System  
Philadelphia, PA*

## Kenneth R. Maravilla, M.D.

*Professor, Radiology and Neurological Surgery  
Director, Magnetic Resonance Research Laboratory  
University of Washington*

## Michelle A. Michel, M.D.

*Professor of Radiology and Otolaryngology  
Chief, Head and Neck Neuroradiology  
Medical College of Wisconsin  
Milwaukee, WI*

## Robert E. Morales, M.D.

*Assistant Professor of Radiology and Otorhinolaryngology -  
Head and Neck Surgery  
University of Maryland School of Medicine  
Baltimore, MD*

(Faculty Continued)

# Faculty (continued)

---

## **Kristine M. Mosier, DMD, Ph.D.**

*Associate Professor of Radiology  
Chief, Head and Neck Imaging  
Section of Neuroradiology and Imaging Sciences  
Department of Radiology  
Indiana University School of Medicine  
Indianapolis, IN*

## **C. Douglas Phillips, M.D., FACR**

*Professor of Radiology  
Director of Head and Neck Imaging  
Weill Cornell Medical College  
New York-Presbyterian Hospital  
Past President, American Society of Head  
and Neck Radiology*

## **Osamu Sakai, M.D., Ph.D.**

*Professor of Radiology, Otolaryngology - Head and Neck  
Surgery, and Radiation Oncology  
Chief of Neuroradiology  
Boston Medical Center, Boston University  
School of Medicine  
Boston, MA*

## **Karen L. Salzman, M.D.**

*Professor of Radiology  
Chief of Neuroradiology  
University of Utah School of Medicine  
Salt Lake City, UT*

## **Ilona M. Schmalfuss, M.D.**

*Adjunct Professor  
Department of Radiology  
North Florida/South Georgia Veterans Administration  
and University of Florida School of Medicine  
Gainesville, FL*

## **Deborah R. Shatzkes, M.D.**

*Professor of Radiology  
Hofstra North Shore - LIJ School of Medicine  
Director of Head and Neck Imaging  
Lenox Hill Hospital and The New York  
Head & Neck Institute  
North Shore - LIJ Health System  
New York, NY*

## **Karuna V. Shekdar, M.D.**

*Assistant Professor of Clinical Radiology  
Raymond and Ruth Perelman School of Medicine,  
University of Pennsylvania  
The Children's Hospital of Philadelphia  
Philadelphia, PA*

## **Peter M. Som, M.D., FACR, F.R.S.M.**

*Professor of Radiology, Otolaryngology,  
and Radiation Oncology  
Chief of Head and Neck Imaging Section  
Ichan School of Medicine at  
Mount Sinai  
New York, NY*

## **Ashok Srinivasan, M.D.**

*Associate Professor  
Director of Neuroradiology  
Department of Radiology  
University of Michigan Health System  
Ann Arbor, MI*

## **Hilda E. Stambuk, M.D.**

*Clinical Head of Head and Neck Imaging  
Attending Radiologist  
Memorial Sloan-Kettering Cancer Center  
New York, NY  
Professor of Clinical Radiology  
Weill Cornell Medical College  
New York, NY*

## **Joel D. Swartz, M.D.**

*President  
Germantown Imaging Associates  
Gladwyne, PA*

## **Lawrence N. Tanenbaum, M.D., FACR**

*Director MRI, CT and Outpatient/Advanced  
Development  
Mount Sinai School of Medicine  
New York, NY*

## **Jane L. Weissman, M.D., FACR**

*Professor of Radiology, Ophthalmology and Otolaryngology  
Director of Head & Neck Imaging  
Oregon Health and Science University  
Portland, OR*

## **Richard H. Wiggins, III, M.D., CIIP, FSIM**

*Director of Head and Neck Imaging  
Professor, Departments of Radiology, Otolaryngology,  
Head and Neck Surgery, and BioMedical Informatics  
University of Utah Health Sciences Center*

## **Daniel W. Williams, III, M.D.**

*Professor of Radiology  
Wake Forest School of Medicine  
Winston-Salem, NC*

# Program

---

## SESSION 1

SHN Anatomy I – Parapharyngeal, Masticator & Parotid Spaces

*H. Christian Davidson, M.D.*

SHN Anatomy II – Spaces that Cross the Hyoid Divide - Carotid, Retropharyngeal, and Perivertebral Spaces

*Karen L. Salzman, M.D.*

Infrahyoid Neck and Thoracic Inlet

*Roy A. Holliday, M.D.*

Imaging of Cervical Lymph Nodes

*Ashley Hawk Aiken, M.D.*

## SESSION 2

Evaluation of Double Vision

*Claudia F. E. Kirsch, M.D.*

Evaluation of Facial Pain

*Daniel W. Williams, III, M.D.*

Evaluation of Facial Paralysis

*Jane L. Weissman, M.D., FACR*

Evaluation of Tinnitus

*C. Douglas Phillips, M.D., FACR*

Evaluation of Hoarseness

*Hilda E. Stambuk, M.D.*

## SESSION 3

MRI/MRA Fusion Imaging for Vascular Loop Compression Syndromes

*John L. Go, M.D.*

Salivary Gland Tumors

*Rebecca S. Cornelius, M.D., FACR*

## SESSION 3 (continued)

Imaging of the Thyroid Mass

*Jenny K. Hoang, MBBS*

Pediatric Ocular Lesions and Orbital Masses

*Bernadette L. Koch, M.D.*

## SESSION 4

Vascular Lesions of the Head & Neck

*Deborah R. Shatzkes, M.D.*

Nasopharyngeal Cancer and Patterns of Spread

*Christine M. Glastonbury, MBBS*

Imaging of Oropharynx Cancer and Implications for Treatment

*Robert E. Morales, M.D.*

Imaging of Oral Cavity Cancer

*Kristine M. Mosier, DM.D., Ph.D.*

## SESSION 5

PET-CT and PET-MR in Head & Neck Cancer

*Barton F. Branstetter, M.D.*

Temporal Bone Anatomy

*Hillary R. Kelly, M.D.*

SNHL and Imaging Workup for Cochlear Implantation

*Hugh D. Curtin, M.D.*

Imaging of Temporal Bone Infection and Inflammation

*Joel D. Swartz, M.D.*

---

## SESSION 6

### Skull Base Anatomy, Anatomic Variants, and “Don’t Touch Me Lesions”

*Nancy J. Fischbein, M.D.*

### How to Image the Patient with CSF Leak?

*Kristen Lloyd Baugnon, M.D.*

### Skull Base Tumors

*Richard H. Wiggins, III, M.D., CIIP, FSIIM*

### Laryngeal Anatomy and Pathology

*Amy Fan-Yee Juliano, M.D.*

## SESSION 7

### The Art of Detecting PNTS – What To Look For

*Ilona M. Schmalfuss, M.D.*

### Evaluation of the Post Treatment Neck

*Peter M. Som, M.D., FACR, FRSM*

### Sinonasal Cavities: Anatomic Landmarks, Drainage Pathways, and Variants

*Michelle A. Michel, M.D.*

### Sinonasal Neoplasm Imaging and Implications for Treatment

*Laurie A. Loevner, M.D.*

## SESSION 8

### Craniofacial Resection – What the Surgeons Need To Know

*Neal Futran, M.D., DMD*

### Maxillofacial Fractures and Complications

*Lindell R. Gentry, M.D., FACR*

### Parathyroid Imaging: 4D CT vs. Sestamibi and CT/MR

*Jenny K. Hoang, MBBS*

*Laurie A. Loevner, M.D.*

### Surveillance Imaging: PET/CT vs. CT/MR

*Barton F. Branstetter, IV, M.D.*

*Lawrence E. Ginsberg, M.D.*

### Low Dose CT for the Head & Neck

*Lawrence N. Tanenbaum, M.D., FACR*

## SESSION 9

### High Resolution Extracranial Nerve Imaging

*Ari M. Blitz, M.D.*

### Diffusion and Perfusion Imaging of Head & Neck

*Ashok Srinivasan, M.D.*

### Are You Ready for the MOC? Unknown Head & Neck Case Review – Part 1

*Philip R. Chapman, M.D.*

### Imaging of Jaw Lesions

*Lisa J. Koenig, BChD, DDS, MS*

# Program *(continued)*

---

## SESSION 10

Complications of Dental Implants –  
What To Look For?

*James J. Abrahams, M.D.*

Otosclerosis and Dysplasia of the  
Temporal Bone - Short Presentation

*Osamu Sakai, M.D., Ph.D.*

Opportunistic Infections in the  
Immunocompromised Patient

*Bronwyn E. Hamilton, M.D.*

Pediatric Emergencies

*Karuna V. Shekdar, M.D.*

Carotid Dissection, Compression and  
Blow Out - Diagnosis and Management

*Michele H. Johnson, M.D.*

## SESSION 11

Imaging of Ocular and Orbital Injuries

*Roberta W. Dalley, M.D.*

Avoiding Errors in Head and Neck  
Cancer Imaging: A Personal Journey

*Lawrence E. Ginsberg, M.D.*

Practical Approach for the Brachial  
Plexus Pathology

*Kenneth R. Maravilla, M.D.*

ASHNR Presidential Address  
Head & Neck Radiology – Past,  
Present, and Future

*Yoshimi Anzai, M.D., MPH*

## SESSION 12

Accountable Care Organization –  
Impact on Radiology Practice

*Norman J. Beauchamp, Jr., M.D., MHS*

Are You Ready for the MOC? Unknown  
Head & Neck Case Review – Part 2

*Joel K. Cure, M.D.*



## ACCESS YOUR CME Better & Faster Than Ever Before!

### Faster Site Speed Improved Searchability Preview Lectures

- Lectures presented by top educators and speakers in their specialty.
- Professionally produced and developed
- Over 1,500 CME hours, with more added every day!

**docmedED.com**  
EXPERIENCE TODAY!



## Share With Your Colleagues

Once the initial order for an entire set is placed, order as many **CME Packs** as needed for as low as:

### On-Demand



**\$195**

### USB



**\$295**

### DVD



**\$295**

### CME Test Included!

To order **CME Packs** visit us online at [edusymp.com](http://edusymp.com) or call toll free (813) 806-1000.

# WATCH | ON USB, DVD OR

Call (813) 806-1000 or Visit [Edusymp.com](http://Edusymp.com) & Search **ASHNRV18**

CME Teaching Activity

## American Society of Head & Neck Radiology Head and Neck Imaging - Current and Future

**FREE COLOR  
SYLLABUS on USB**  
with purchase of entire set

AMA PRA Category 1 Credit(s)<sup>™</sup> Available until **January 14, 2021**

☐ **USB**

☐ **DVD**

**SUBTOTAL**

**ENTIRE SET** - 22.0 AMA PRA Category 1 Credit(s)<sup>™</sup>

☐ **\$1,695**

☐ **\$1,695**

**SYLLABUS:** Paper Syllabus **INCLUDED**

# \_\_\_\_\_

# \_\_\_\_\_

**SUBTOTAL**

For orders sent to a Florida address, please add 7% sales tax

### CME APPLICATION

1 application required per person

**SUBTOTAL**

**ENTIRE SET** ☐ Paper # \_\_\_\_\_ ☐ Online # \_\_\_\_\_ at \$95 each

### CME ADD PACKS

Includes Video Series, Syllabus & CME Application after initial purchase for additional users.

**SUBTOTAL**

**ENTIRE SET** CME Type: ☐ Paper # \_\_\_\_\_ ☐ Online # \_\_\_\_\_

☐ **\$295**

☐ **\$295**

### SHIPPING

*\*Customer is solely responsible for the cost of duties, customs, tariffs, import fees and/or other costs associated with your order*

**SUBTOTAL**

### Domestic

☐ Ground Shipping **INCLUDED**

☐ Overnight (\$75)

☐ 2nd Day (\$45)

☐ 3rd Day (\$30)

### International\*

☐ \$175 (excluding Canada or Mexico)

☐ Mexico & Canada \$75

**GRAND TOTAL**

Name

☐ M.D. ☐ D.O. ☐ Ph.D. ☐ P.A. ☐ Other

Company / Hospital

Specialty

Group Practice Name

Address No P.O. Boxes. / We cannot be responsible for non-delivery when we receive an incorrect address.

City / State / Zip / Country

Phone

Email - For Shipment Notification & Online Test

Card Number

Exp. Date

Security Code

Billing Address (if different than above)

City / State / Zip / Country

Cardholder Signature

## 4 EASY WAYS TO ORDER

We Accept



## INTERNET

On USB or DVD: [www.edusymp.com](http://www.edusymp.com)

On-Demand: [docmedED.com](http://docmedED.com)

### MAIL

Check payable to:

Educational Symposia  
5620 West Sligh Avenue  
Tampa, Florida 33634-4490

### FAX

(813) 806-1001

### PHONE

(813) 806-1000

**USB & DVD Cancellation Policy:** Return within 15 days of receiving- No refunds after. \$125.00 processing fee for each series. Shipping non-refundable. Cancellations must be in writing. No CME credit on returned purchases. 2 + returns voids cancellation policy.

Stream Today - [docmedED.com](http://docmedED.com)

CME Teaching Activity

**American Society of Head & Neck Radiology  
Head and Neck Imaging - Current and Future**

**\$1,540**  
ENTIRE SERIES

**NOW AVAILABLE - STREAMING CME PACKS \$195**

[docmedED.com](http://docmedED.com) On-Demand has

## CME FOR YOUR SPECIALTY

**ACCESS LECTURES ANYTIME, FROM ANYWHERE!** High quality video lectures on your computer, tablet, TV or any internet connected device. Lectures can be accessed as often as you like for up to 3 years. Visit [docmedED.com](http://docmedED.com) and choose American Society of Head & Neck Radiology Head and Neck Imaging - Current and Future to get started.



### QUICK AND EASY VIEWING:

- Step 1:** Visit [docmeded.com](http://docmeded.com) and create an account.
- Step 2:** Find a great lecture or in the search box enter the code **"ASHNRV18"**.
- Step 3:** Purchase, Watch & Receive Your CME.

This CME teaching activity is available in its entirety, as individual lectures, as well as CME Packs. The platform will bookmark where you left off and allows you to resume when you return. Take your time and go at your own pace.

To claim CME credit complete the required test and short evaluation. Then print your certificate.

\*\* Internet connection is required to view this **on-demand** program.

This is not a downloadable product.

**On-Demand Cancellation Policy:** We offer a free trial period. Please use the evaluation period to ensure your online system meets the requirements necessary to view. If you are not satisfied, you may receive a refund within 90 days if you have watched less than 20% of your purchase.

**VIEW CME  
Anywhere, Anytime!**

We Are Continually  
Adding To Our  
Comprehensive Library

[docmedED.com](http://docmedED.com)  
**ESI ON-DEMAND**