

AVAILABLE NOW  
**ON-DEMAND,**  
**USB, OR DVD**

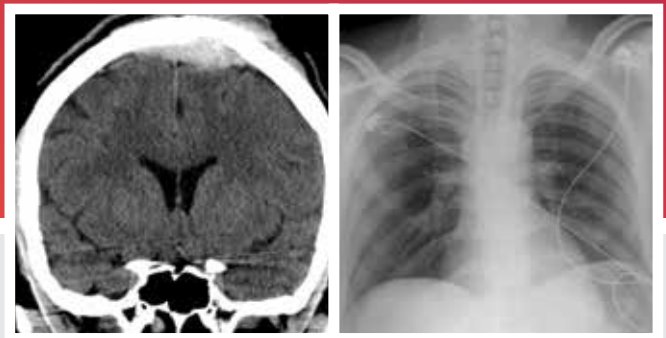
A CME Teaching Activity

# 2018 Radiology After Five:

How to Make Night and Weekend  
Call a Success!

---

**Designated for SA-CME**



16.75 *AMA PRA Category 1 Credit(s)*<sup>TM</sup>

Release Date: August 15, 2018

**ESI** Educational  
Symposia

docmed**ED**  
**ESI** ON-DEMAND

## About This CME Teaching Activity

This CME activity emphasizes the clinical and radiological advances in emergency and critical care imaging procedures. State of the art imaging protocols, advanced techniques and diagnostic pearls and pitfalls are emphasized so that studies can be performed and interpreted in an optimal and time efficient manner. The need for careful and complete communication between the radiologist and the clinicians is stressed along with modern compliance and reimbursement practices.

## Target Audience

This course is primarily intended and designed to educate those physicians and other medical personnel who use, supervise and/or interpret radiology studies and procedures in emergency suites, trauma centers and intensive care units. Thus, this should be particularly helpful for radiologists, intensivists, trauma surgeons, allied health personnel and emergency medicine physicians. It should also be beneficial for those who order imaging studies and wish to better understand current applications of imaging methods and indications.

## Scientific Sponsor

Educational Symposia

## Accreditation

**Physicians:** Educational Symposia is accredited by the Accreditation Council for Continuing Medical Education (ACCME) to provide continuing medical education for physicians.

Educational Symposia designates this enduring material for a maximum of 16.75 *AMA PRA Category 1 Credit(s)*<sup>TM</sup>. Physicians should claim only the credit commensurate with the extent of their participation in the activity.

**SA-CME:** Credits awarded for this enduring activity are designated "SA-CME" by the American Board of Radiology (ABR) and qualify toward fulfilling requirements for Maintenance of Certification (MOC) Part II: Lifelong Learning and Self-assessment.

All activity participants are required to take a written or online test in order to be awarded credit. (Exam materials, if ordered, will be sent with your order.) All course participants will also have the opportunity to critically evaluate the program as it relates to practice relevance and educational objectives.

**AMA PRA Category 1 Credit(s)<sup>TM</sup> for this activity may be claimed until August 14, 2021.**

This CME activity was planned and produced by Educational Symposia,  
a leader in continuing medical education since 1975.

This activity was planned and produced in accordance with the ACCME Essential Areas and Elements.

## Educational Objectives

At the completion of this CME teaching activity, you should be able to:

- Discuss approaches to imaging of the most frequent and serious emergency and critical care problems that occur in their practice.
- Demonstrate an increased awareness on how best to respond to the wide variety of imaging and interventional situations that occur most often during the evenings and weekends.
- Implement into their practices protocols for assessing the trauma patient in a time efficient manner.
- Discuss the malpractice risks associated with trauma imaging.

*No special educational preparation is required for this CME activity.*

## ACCESS YOUR CME Better & Faster Than Ever Before!

### Faster Site Speed Improved Searchability Preview Lectures

- Lectures presented by top educators and speakers in their specialty.
- Professionally produced and developed
- Over 1,300 CME hours, with more added every day!

**docmedED.com**  
EXPERIENCE TODAY!



## Share With Your Colleagues

Once the initial order for an entire set is placed, order as many **CME Packs** as needed for as low as:

### On-Demand



**\$195**

### USB



**\$295 - \$365**

### DVD



**\$295 - \$365**

### CME Test Included!

To order **CME Packs** visit us online at [edusymp.com](http://edusymp.com) or call toll free (813) 806-1000.

**Mark P. Bernstein, M.D.**

*Trauma / Emergency Radiologist  
Clinical Associate Professor of Radiology  
Department of Radiology  
New York University School of Medicine  
NYU Langone Health  
Bellevue Hospital & Trauma Center  
New York, NY*

**Richard Duszak, M.D., FACR, FRBMA**

*Professor and Vice Chair for Health Policy and Practice  
Department of Radiology and Imaging Sciences  
Emory University School of Medicine  
Atlanta, GA*

**Scott H. Faro, M.D.**

*Professor of Radiology (PAR)  
Division of Neuroradiology  
Johns Hopkins University  
Baltimore, MD  
Professor of Biomedical, Electrical and  
Computer Engineering  
Temple University  
Philadelphia, PA*

**Jeffrey P. Kanne, M.D.**

*Professor and Chief of Thoracic Imaging  
Vice Chair of Quality and Safety  
Department of Radiology  
University of Wisconsin School of Medicine and  
Public Health  
Madison, WI*

**Sherelle L. Laifer-Narin, M.D.**

*Associate Professor of Radiology  
Division of Abdominal Imaging  
Director of Ultrasound and Fetal MRI  
Columbia University / NY Presbyterian Hospital  
New York, NY*

**Jorge A. Soto, M.D.**

*Chairman of Radiology  
Boston Medical Center  
Professor of Radiology  
Boston University School of Medicine  
Boston, MA*

**Robert M. Steiner, M.D., FACR, FACC**

*Professor of Radiology  
Columbia University School of Medicine  
New York, NY  
Professor of Pulmonary Medicine and Thoracic Surgery  
Temple University School of Medicine  
Philadelphia, PA*

**Abbey J. Winant, M.D., M.F.A.**

*Instructor in Radiology  
Boston Children's Hospital, Harvard Medical School  
Boston, MA*

**Session 1**

Emergency Radiology:  
Perspectives from 30,000 Feet  
*Richard Duszak, M.D., FACR, FRBMA*

The Normal Brain and Important Variants  
*Scott H. Faro, M.D.*

Maxillofacial Trauma: Saving Face  
*Mark P. Bernstein, M.D.*

Brain Trauma and Blood  
*Scott H. Faro, M.D.*

**Session 2**

Strokes and Mass Lesions  
*Scott H. Faro, M.D.*

Malpractice and Risk Management  
Considerations in Emergency Radiology  
*Richard Duszak, M.D., FACR, FRBMA*

Neuro CT Jeopardy  
*Scott H. Faro, M.D.*

**Session 3**

Ins and Outs of Cervical Spine Trauma  
*Mark P. Bernstein, M.D.*

Radiology Fraud and Abuse:  
Tales from the Trenches  
*Richard Duszak, M.D., FACR, FRBMA*

The Value of MDCT in Multi-Trauma  
Imaging  
*Mark P. Bernstein, M.D.*

**Session 4**

Pelvic Trauma Imaging  
*Mark P. Bernstein, M.D.*

Radiology Documentation and  
Reimbursement: Making the Best of  
Your Words  
*Richard Duszak, M.D., FACR, FRBMA*

Childhood Accidental and Non-accidental  
Musculoskeletal Disorders  
*Abbey J. Winant, M.D., M.F.A.*

## Session 5

Abdominal Pain in the ER:  
Multimodality Evaluation

*Sherelle L. Laifer-Narin, M.D.*

MDCT Imaging of Acute Abdominal Pain:  
Which Technique is Optimal

*Jorge A. Soto, M.D.*

Emergency! Acute Pelvic Pain in the  
Acute Setting

*Sherelle L. Laifer-Narin, M.D.*

Imaging of Acute Gastrointestinal Bleeding:  
Current Concepts

*Jorge A. Soto, M.D.*

## Session 6

Imaging of Acute Pancreatitis

*Jorge A. Soto, M.D.*

Minor Pain or Major Trouble - Pelvic Pain in  
Pregnancy

*Sherelle L. Laifer-Narin, M.D.*

Pitfalls in Imaging of Abdominal Trauma

*Jorge A. Soto, M.D.*

## Session 7

Use of MR of Abdominal and  
Pelvic Emergencies

*Jorge A. Soto, M.D.*

Usual and Unusually Located Ectopic  
Pregnancies

*Sherelle L. Laifer-Narin, M.D.*

A Practical Approach to the Acute Abdomen  
in Infants and Children

*Abbey J. Winant, M.D., M.F.A.*

Interesting Pelvic and Abdominal  
Case Based Session

*Sherelle L. Laifer-Narin, M.D.*

## Session 8

Acute Traumatic Injury of the Thorax Part I

*Robert M. Steiner, M.D., FACR, FACC*

Acute Traumatic Injury of the Thorax Part II

*Jeffrey P. Kanne, M.D.*

Critical Care Radiology: What to Look For

*Robert M. Steiner, M.D., FACR, FACC*

Aortic and Cardiac Trauma:  
Multimodality Approach

*Jeffrey P. Kanne, M.D.*

## Session 9

The Acute Dyspneic Patient

*Jeffrey P. Kanne, M.D.*

Acute Community Acquired and Nosocomial  
Pneumonia: Separating the Forest from  
the Trees

*Robert M. Steiner, M.D., FACR, FACC*

Imaging the Patient with Suspected  
Pulmonary Thromboembolism:  
Diagnostic Algorithm and Results of Imaging

*Jeffrey P. Kanne, M.D.*

## Session 10

Pediatric Thoracic Emergencies:  
What Radiologists Need to Know

*Abbey J. Winant, M.D., M.F.A.*

COPD and IPF Exacerbation:  
A Frequent and Often Underdiagnosed  
Reason for Patient Visit to the Emergency Unit

*Robert M. Steiner, M.D., FACR, FACC*

Pediatric Interesting Case Conference:  
Interactive Session

*Abbey J. Winant, M.D., M.F.A.*

Cardiopulmonary Studies

*Robert M. Steiner, M.D., FACR, FACC*

# WATCH | ON USB, DVD OR

Call (813) 806-1000 or Visit [Edusymp.com](http://Edusymp.com) & Search **RAFV18**

CME Teaching Activity

## 2018 Radiology After Five:

How to Make Night and Weekend Call a Success!

**FREE COLOR SYLLABUS on USB**  
with purchase of entire set

AMA PRA Category 1 Credit(s)<sup>™</sup> Available until **August 14, 2021**

☐ **DVD**

☐ **USB**

**SUBTOTAL**

**ENTIRE SET** - 16.75 AMA PRA Category 1 Credit(s)<sup>™</sup>

☐ **\$1,165**

☐ **\$1,165**

**SYLLABUS:** USB **INCLUDED** with USB or DVD (Purchase Full Color Printed \$95.00 each)

# \_\_\_\_\_

# \_\_\_\_\_

**SUBTOTAL**

For orders sent to a Florida address, please add 7% sales tax

### CME APPLICATION

1 application required per person

**SUBTOTAL**

**ENTIRE SET** ☐ Paper # \_\_\_\_\_ ☐ Online # \_\_\_\_\_ at \$95 each

### CME ADD PACKS

Includes Video Series, Syllabus & CME Application after initial purchase for additional users.

**SUBTOTAL**

**ENTIRE SET** CME Type: ☐ Paper # \_\_\_\_\_ ☐ Online # \_\_\_\_\_

☐ **\$295**

☐ **\$295**

### SHIPPING

*\*Customer is solely responsible for the cost of duties, customs, tariffs, import fees and/or other costs associated with your order*

**SUBTOTAL**

#### Domestic

☐ Ground Shipping **INCLUDED**

☐ Overnight (\$75)

☐ 2nd Day (\$45)

☐ 3rd Day (\$30)

#### International\*

☐ \$175 (excluding Canada or Mexico)

☐ Mexico & Canada \$75

**GRAND TOTAL**

Name

☐ M.D. ☐ D.O. ☐ Ph.D. ☐ P.A. ☐ Other

Company / Hospital

Specialty

Group Practice Name

Address No P.O. Boxes. / We cannot be responsible for non-delivery when we receive an incorrect address.

City / State / Zip / Country

Phone

Email - For Shipment Notification & Online Test

Card Number

Exp. Date

Security Code

Billing Address (If different than above)

City / State / Zip / Country

Cardholder Signature

## 4 EASY WAYS TO ORDER

We Accept



### INTERNET

On USB or DVD: [www.edusymp.com](http://www.edusymp.com)

On-Demand: [docmedED.com](http://docmedED.com)

### MAIL

Check payable to:

Educational Symposia  
5620 West Sligh Avenue  
Tampa, Florida 33634-4490

### FAX

(813) 806-1001

### PHONE

(813) 806-1000

**USB & DVD Cancellation Policy:** Return within 15 days of receiving- No refunds after. \$125.00 processing fee for each series. Shipping non-refundable. Cancellations must be in writing. No CME credit on returned purchases. 2 + returns voids cancellation policy.



# WATCH | ON-DEMAND

Stream Today - [docmedED.com](http://docmedED.com)

CME Teaching Activity

## 2018 Radiology After Five:

How to Make Night and Weekend Call a Success!

# \$1,005

ENTIRE SERIES

**NOW AVAILABLE - STREAMING CME PACKS \$195**

[docmedED.com](http://docmedED.com) On-Demand has

## CME FOR YOUR SPECIALTY

**ACCESS LECTURES ANYTIME, FROM ANYWHERE!** High quality video lectures on your computer, tablet, TV or any internet connected device. Lectures can be accessed as often as you like for up to 3 years. Visit [docmedED.com](http://docmedED.com) and choose 2018 Radiology After Five: How to Make Night and Weekend Call a Success! to get started.



### QUICK AND EASY VIEWING:

- Step 1:** Visit [docmeded.com](http://docmeded.com) and create an account.
- Step 2:** Find a great lecture or in the search box enter the code **"RAFV18"**.
- Step 3:** Purchase, Watch & Receive Your CME.

This CME teaching activity is available in its entirety, as individual lectures, as well as CME Packs. The platform will bookmark where you left off and allows you to resume when you return. Take your time and go at your own pace.

To claim CME credit complete the required test and short evaluation. Then print your certificate.

\*\* Internet connection is required to view this **on-demand** program.

This is not a downloadable product.

**On-Demand Cancellation Policy:** We offer a free trial period. Please use the evaluation period to ensure your online system meets the requirements necessary to view. If you are not satisfied, you may receive a refund within 90 days if you have watched less than 20% of your purchase.

# VIEW CME

Anywhere, Anytime!

We Are Continually  
Adding To Our  
Comprehensive Library

[docmedED.com](http://docmedED.com)  
**ESI ON-DEMAND**